

TRACT 2061

LIVERMORE, ALAMEDA COUNTY, CALIFORNIA

JULY 1959

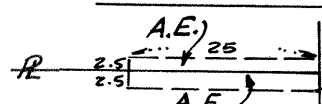

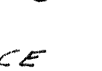
GILBERT A. FITCH
LIVERMORE

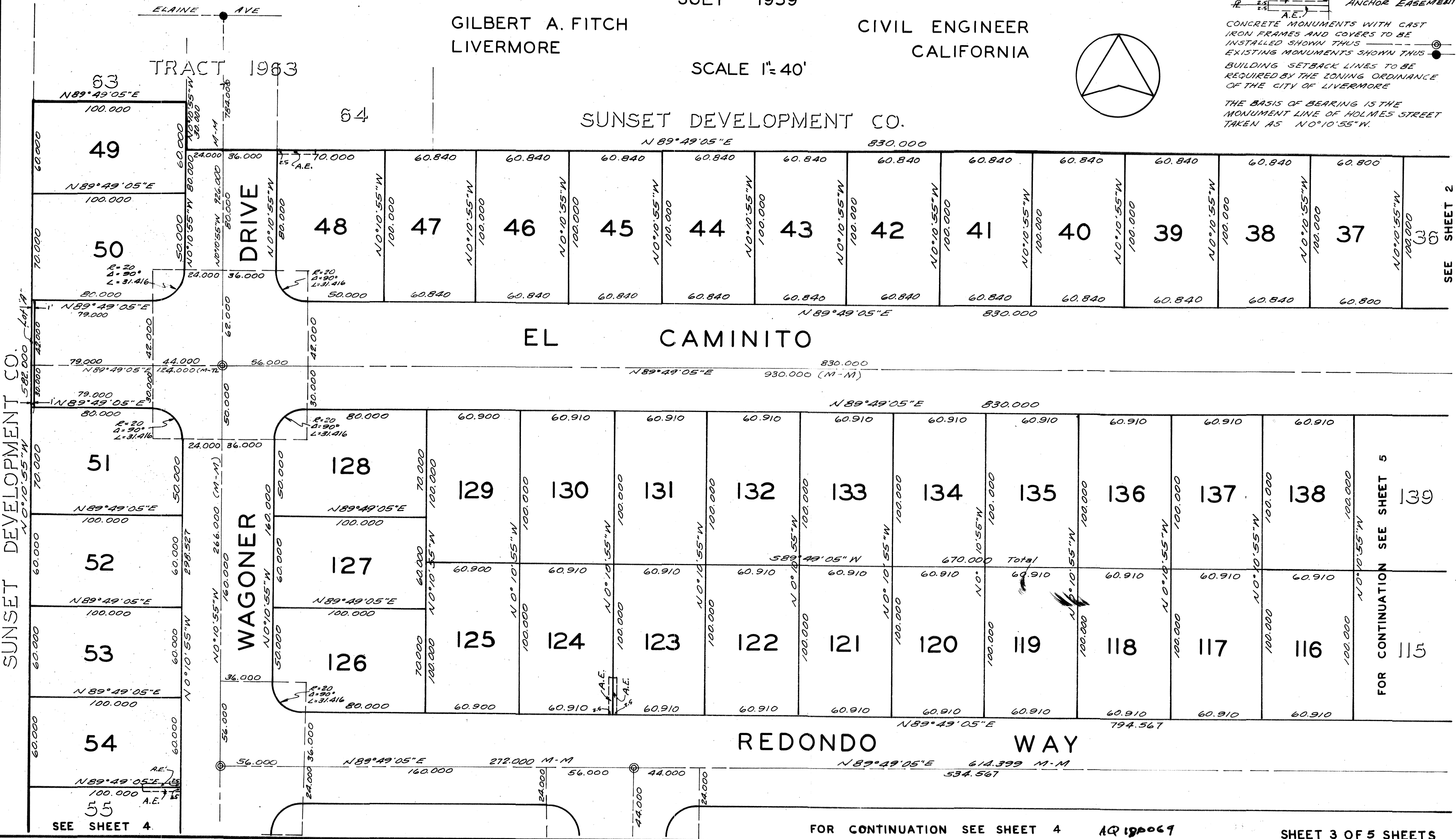
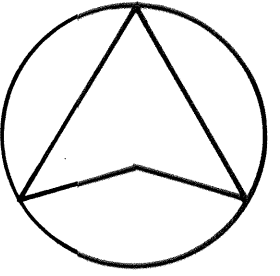
CIVIL ENGINEER
CALIFORNIA

SCALE 1"=40'

SUNSET DEVELOPMENT CO.

LEGEND

 ANCHOR EASEMENT
CONCRETE MONUMENTS WITH CAST IRON FRAMES AND COVERS TO BE INSTALLED SHOWN THUS 
EXISTING MONUMENTS SHOWN THUS 
BUILDING SETBACK LINES TO BE REQUIRED BY THE ZONING ORDINANCE OF THE CITY OF LIVERMORE
THE BASIS OF BEARING IS THE MONUMENT LINE OF HOLMES STREET TAKEN AS N 0° 10' 55" W.



SEE SHEET 2

FOR CONTINUATION SEE SHEET 5

TR. 2061

FOR CONTINUATION SEE SHEET 4

AQ 100069

SHEET 3 OF 5 SHEETS