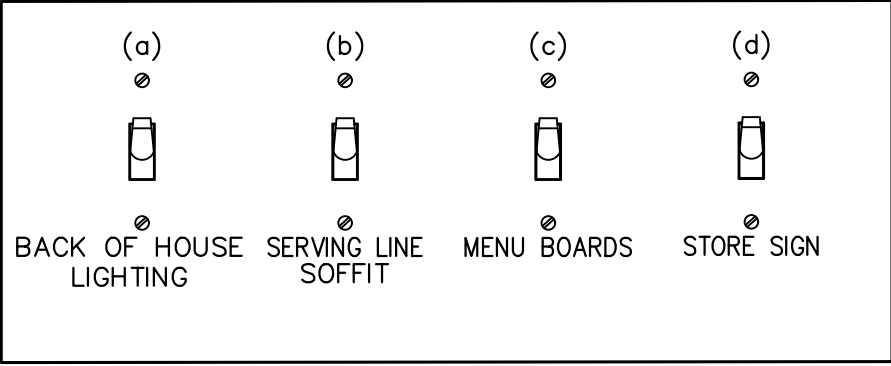


NOTE:  
CONTRACTOR TO INSTALL 3 GANG SWITCH BOX AS SHOWN  
BELOW. DO NOT INSTALL SEPARATE/INDIVIDUAL BOXES FOR EACH  
SWITCH

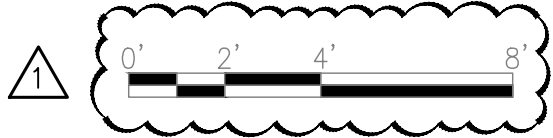
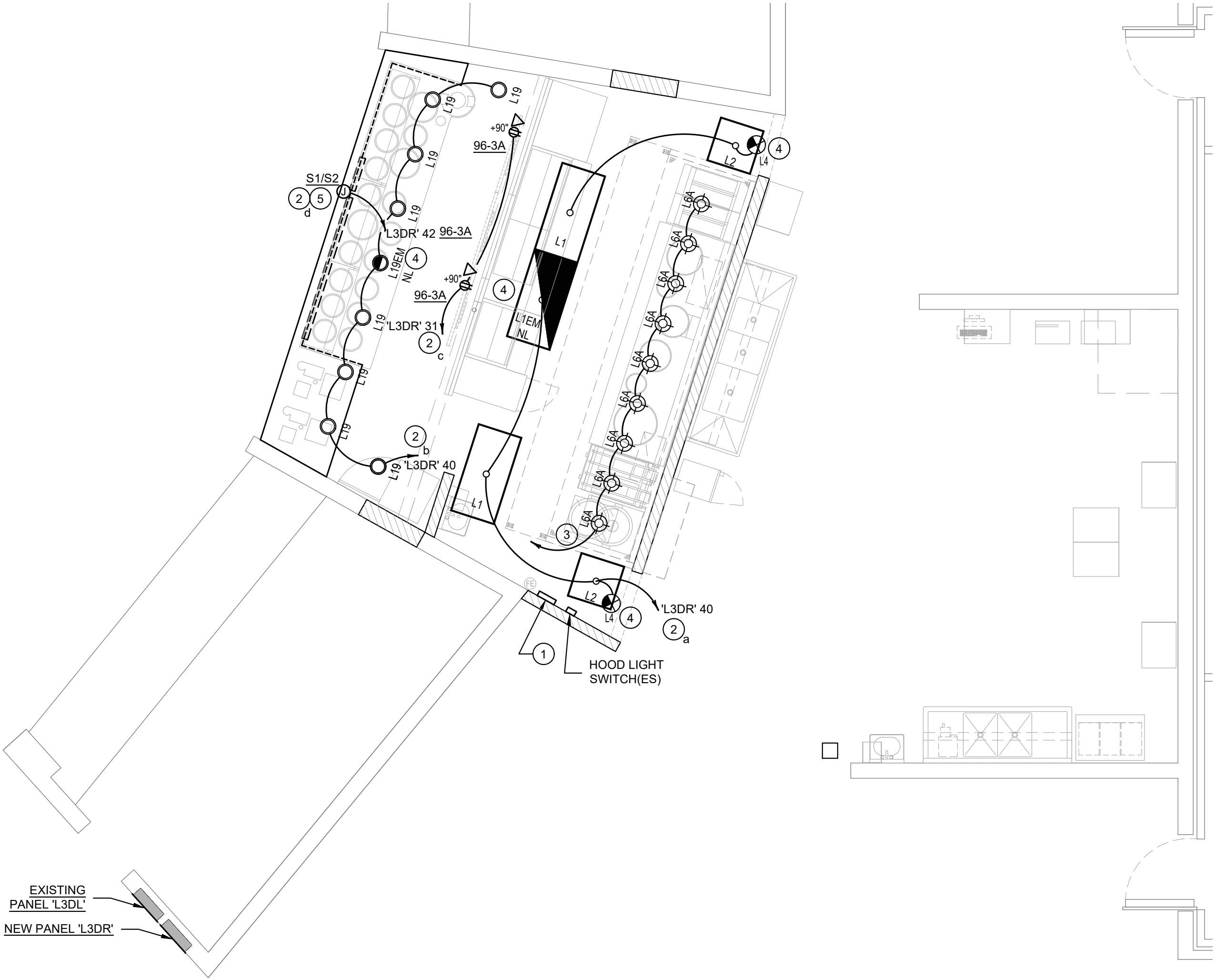


SWITCHBANK 'A' SCHEDULE				
TAG	SWITCH TYPE	AREA SERVED / SWITCH LABEL	CIRCUIT	LOAD
a	TOGGLE SWITCH	BACK-OF-HOUSE	'L3DR' 40	550 VA
b	TOGGLE SWITCH	SERVING LINE SOFFIT	'L3DR' 40	173 VA
c	TOGGLE SWITCH	MENU, LED ACCENTS	'L3DR' 31	900 VA
d	TOGGLE SWITCH	STORE SIGN	'L3DR' 42	1,200 VA

- SWITCHBANK 'A'. REFER TO SCHEDULE THIS SHEET (4/ E-101).
- ROUTE HOMERUN THROUGH LIGHTING SWITCHBANK 'A' (SWITCHES AS NOTED IN LOWER CASE). REFER TO SCHEDULE (4/E-101) FOR MORE INFORMATION.
- ROUTE THROUGH CONTACTS IN HOOD CONTROL PANEL 'M4' FOR CIRCUIT POWER. REFER TO DETAILS, SHEETS 8 / E-400.
- PROVIDE SEPARATE UN-SWITCHED HOT CONDUCTOR TO NIGHT LIGHT 'NL' FIXTURES AND EMERGENCY FIXTURES. CONNECT TO EXISTING EMERGENCY LIGHTING CIRCUIT SERVING THIS AREA.
- J-BOX FOR SIGNAGE. COORDINATE LOCATION WITH ARCHITECT / OWNER / SIGN PACKAGE. SIGN DISCONNECT PROVIDED BY SIGN CONTRACTOR.

- CONTRACTOR SHALL PROVIDE ALL REQUIRED HARDWARE, BRACKETS, ETC. FOR A COMPLETE INSTALLATION.
- ALL LIGHTING FIXTURES SHALL BE SUPPORTED PER N.E.C. 410-16(C). SEE DETAIL, SHEET 1 / E-4.00.
- CONTRACTOR SHALL INSTALL ALL LIGHTING FIXTURES INCLUDING OWNER-FURNISHED FIXTURES.
- ALL FIXTURE BALLASTS/DRIVERS SHALL BE U.L. LISTED.
- WHEN WORKING IN JURISDICTIONS WHICH HAVE ADOPTED THE 2008 NEC OR LATER, ALL MULTI-WIRE BRANCH CIRCUITS TO HAVE SEPARATE NEUTRALS TO MEET THE REQUIREMENTS OF 2008 NEC 210.4(B).
- ALL CIRCUITRY SHOWN WITHOUT TICKS SHALL HAVE (2) WIRES PLUS EQUIPMENT GROUNDING CONDUCTOR.
- 'NL' DESIGNATION INDICATES NIGHT LIGHT ON UN-SWITCHED CIRCUIT.

LIGHTING SWITCHBANK SCHEDULE		4	#	LIGHTING KEYED NOTES		3	LIGHTING GENERAL NOTES		2
	NOT TO SCALE	E-101		NOT TO SCALE	E-101		NOT TO SCALE	E-101	



LIGHTING FLOOR PLAN 1  
Scale: 1/4"=1'-0" E-101



PANDA RESTAURANT GROUP INC.  
1683 Walnut Grove Ave.  
Rosemead, California  
91770  
Telephone: 626.799.9898  
Facsimile: 626.372.8288

All ideas, designs, arrangement and plans indicated or represented by this drawing are the property of Panda Express Inc. and were created for use on this specific project. None of these ideas, designs, arrangements or plans may be used by or disclosed to any person, firm, or corporation without the written permission of Panda Express Inc.

REVISIONS:

△	PLAN REVIEW COMMENTS	01/14/2022
---	----------------------	------------

ISSUE DATE:

1	95% SUBMITTAL	11/19/2021
2	100% SUBMITTAL	01/14/2022

DRAWN BY: JMJ

PANDA PROJECT #:  
ARCH PROJECT #:



MARSHALL & BOLLWERK  
ENGINEERING, INC.  
8861 Highway 82, Suite 400  
Woodstock, Ga. 30189  
p: (678) 795-0333, f: (678) 325-4559  
e: mbe@mbeinc.net



PANDA EXPRESS  
SPACE 8126  
EXCHANGE FOOD COURT  
FT LEONARD WOOD, MO

E-101

LIGHTING FLOOR PLAN

BID SET (NOT FOR CONSTRUCTION) DATE: 2022/01/18