

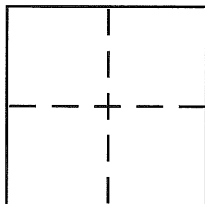
CORNER RECORD

Document Number BK 31 Pg 45
CR 3503

City of Oakland

County of Alameda, California

Brief Legal Description Parcels A & B Parcel Map 9456 (304 M 17)



CORNER TYPE

Government Corner ☐ Control ☐
Meander ☐ Property ☒
Rancho ☐ Other ☐
Date of Survey September 17, 2008

COORDINATES (Optional)

N. _____
E. _____
Zone _____ NAD27 ☐ NAD83 ☐
NAD83 Epoch _____
Elev. _____
Vert. Datum: NGVD29 ☐ NAVD88 ☐
Meas. Units: Metric ☐ Imperial ☐

Corner - Left as found ☐ Found and tagged ☐ Established ☒ Reestablished ☐ Rebuilt ☐

Identification and type of corner found: Evidence used to identify or procedure used to establish or reestablish the corner:

Found city pin monument

A description of the physical condition of the monument as found and as set or reset:

Set brass tag R.C.E. 18650, in concrete
Found brass tag RCE 18650, in concrete
Set rebar & cap R.C.E. 18650
Found rebar & cap R.C.E. 18650

SURVEYOR'S STATEMENT

This Corner Record was prepared by me or under my direction in conformance with

the Land Surveyor's Act on Oct. 1, 2008

Signed [Signature] P.L.S. or R.C.E. No. 18650

COUNTY SURVEYOR'S STATEMENT

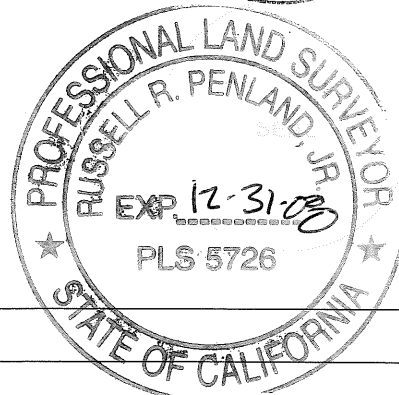
This Corner Record was received 10-14-08

and examined and filed 11-24-08

Signed [Signature] P.L.S. or R.C.E. No. 5726

Title COUNTY SURVEYOR

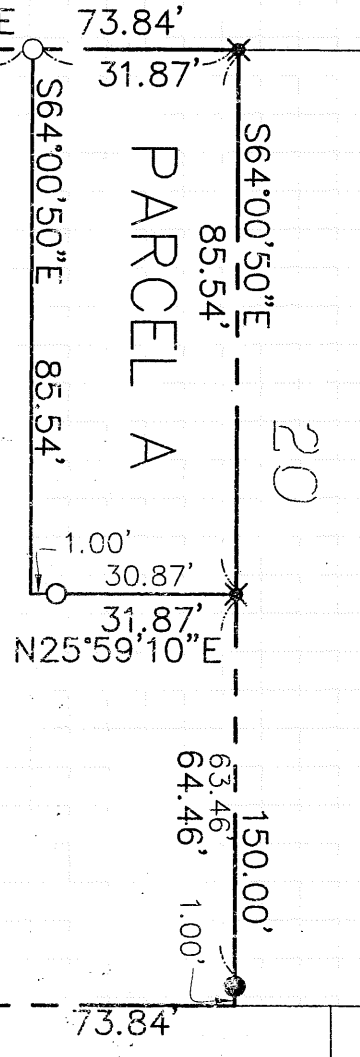
County Surveyor's Comment _____



DESMOND STREET (60' WIDE)

CITY MONUMENT
AT 51ST STREET SSW62

9-2



LEGEND

- ✕ SET BRASS TAG RCE 18650, IN CONCRETE
- ✕ FOUND BRASS TAG RCE 18650, IN CONCRETE
- SET REBAR AND CAP RCE 18650
- FOUND REBAR AND CAP RCE 18650
- ⊙ FOUND CITY PIN MONUMENT

CORNER RECORD

PARCELS A AND B
 PARCEL MAP 9456 (304 M 17)
 CITY OF OAKLAND, COUNTY OF ALAMEDA, CALIFORNIA
 SEPTEMBER, 2008
 SCALE: 1" = 30'

MORAN ENGINEERING, INC.

CITY MONUMENT
AT 49TH STREET SSW58
 49TH STREET (60' WIDE)

F.B. NO. 1121

CIVIL ENGINEERS / LAND SURVEYORS
 1930 SHATTUCK AVENUE, SUITE A
 BERKELEY, CALIFORNIA 94704
 (510) 848-1930
 DESMOND--CR.DWG

JOB NO. 06-6530