

- LEGEND**
- = FOUND SURVEY MONUMENTS PER MAP CASE 2, DRAWER 1, PAGE 138, M.C.R., OR MAP CASE 2, DRAWER 2, PAGE 96, M.C.R.
  - = 5/8" REBAR WITH ALUMINUM CAP STAMPED P/C RCE 21908 SET THIS SURVEY.
  - () = RECORD BEARINGS AND DISTANCES AGREE WITH THIS SURVEY UNLESS SHOWN OTHERWISE.

- RECORD DATA FROM:**
1. MAP CASE 2, DRAWER 1, PAGE 138, M.C.R.
  2. MAP CASE 2, DRAWER 2, PAGE 96, M.C.R.
  3. RECORD DATA PER INST. NO. 2001-02639 M.C.R.

- NOTES**
1. ALL DISTANCES SHOWN HEREON ARE IN FEET AND DECIMALS THEREOF.
  2. THIS MAP REPRESENTS A BOUNDARY LINE SURVEY ONLY AND DOES NOT SHOW RIGHTS OF WAY, EASEMENTS OR ENCROACHMENTS, OTHER THAN THOSE SHOWN.
- TS = THIS SURVEY  
C.R. = COUNTY ROAD  
M.C.R. = MENDOCINO COUNTY RECORDS

**BASIS OF BEARINGS**

NORTH 17°00'48" EAST BETWEEN FOUND MONUMENTS LOCATED AS SHOWN ON A MAP FILED IN MAP CASE 2, DRAWER 1, PAGE 138, MENDOCINO COUNTY RECORDS.

# RECORD OF SURVEY FOR UKIAH BIBLE CHURCH IN LOT 98-YOKAYO RANCHO PORTION OF LOTS 27, 30, AND 31 PER UNIT TWO DEERWOOD PARK SUBDIVISION M.C.R. MENDOCINO COUNTY, CALIFORNIA AUGUST 2015

**SURVEYOR'S STATEMENT**

THIS MAP CORRECTLY REPRESENTS A SURVEY MADE BY ME OR UNDER MY DIRECTION IN CONFORMANCE WITH THE REQUIREMENTS OF THE PROFESSIONAL LAND SURVEYORS' ACT AT THE REQUEST OF UKIAH BIBLE CHURCH IN 2015.

*George C. Rau*

GEORGE C. RAU R.C.E. 21908  
LICENSE EXPIRES 09/30/2015

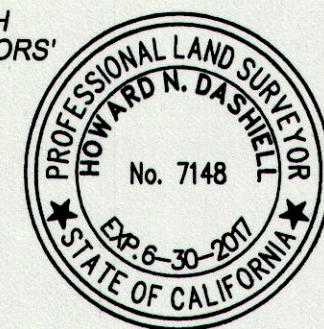


**COUNTY SURVEYOR'S STATEMENT**

THIS MAP HAS BEEN EXAMINED IN ACCORDANCE WITH SECTION 8766 OF THE PROFESSIONAL LAND SURVEYORS' ACT THIS 25 DAY OF AUGUST, 2015.

*Howard N. Dashiell*

HOWARD N. DASHIELL, PLS 7148  
COUNTY SURVEYOR  
COUNTY OF MENDOCINO, STATE OF CALIFORNIA  
LICENSE EXPIRES 30 JUNE, 2017



**RECORDER'S STATEMENT**

FILED THIS 16<sup>th</sup> DAY OF Sep., 2015, AT 10:12 A.M.  
IN MAPS, DRAWER 84, PAGE 88, M.C.R.  
AT THE REQUEST OF GEORGE C. RAU  
FEE PAID: \$ 9.00

SUSAN M. RANOGAK  
ASSESSOR, COUNTY CLERK-RECORDER

BY *Minna Munn* DEPUTY

Serial# 045

ONE SHEET ONLY

MAPS	
DRAWER	84
PAGE	88