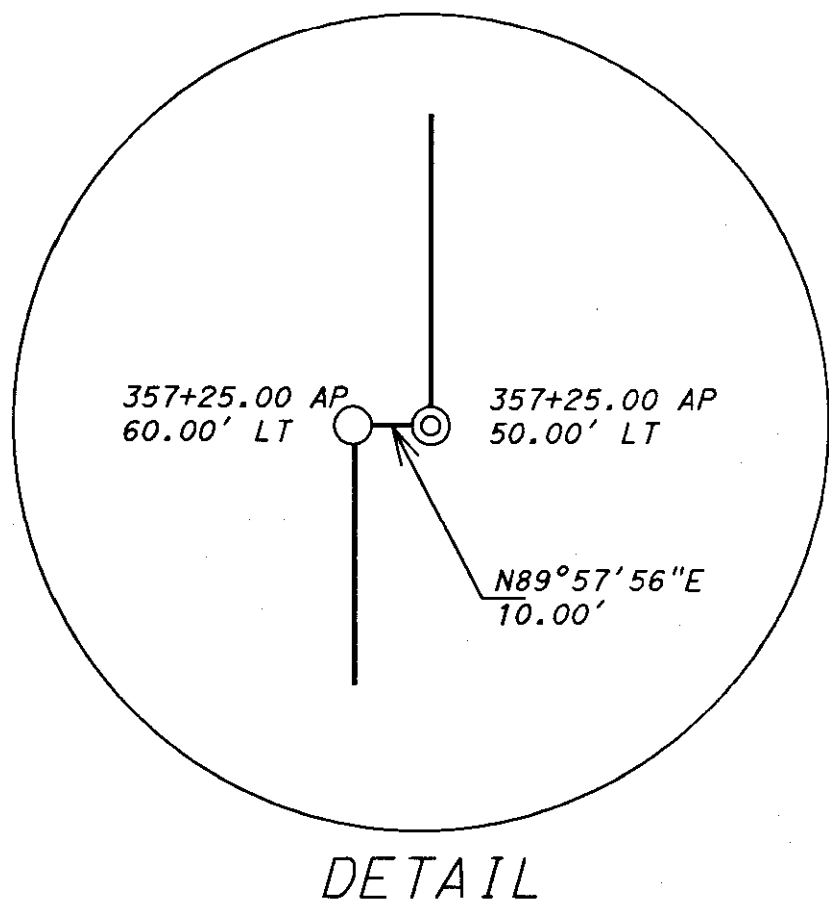


RECORD OF SURVEY NO. 31-45 SECTION 21/22, TOWNSHIP 7 NORTH, RANGE 23 EAST, M.D.B. & M.

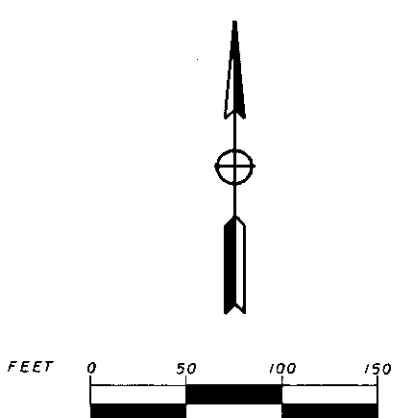
SHEET 6 OF 9



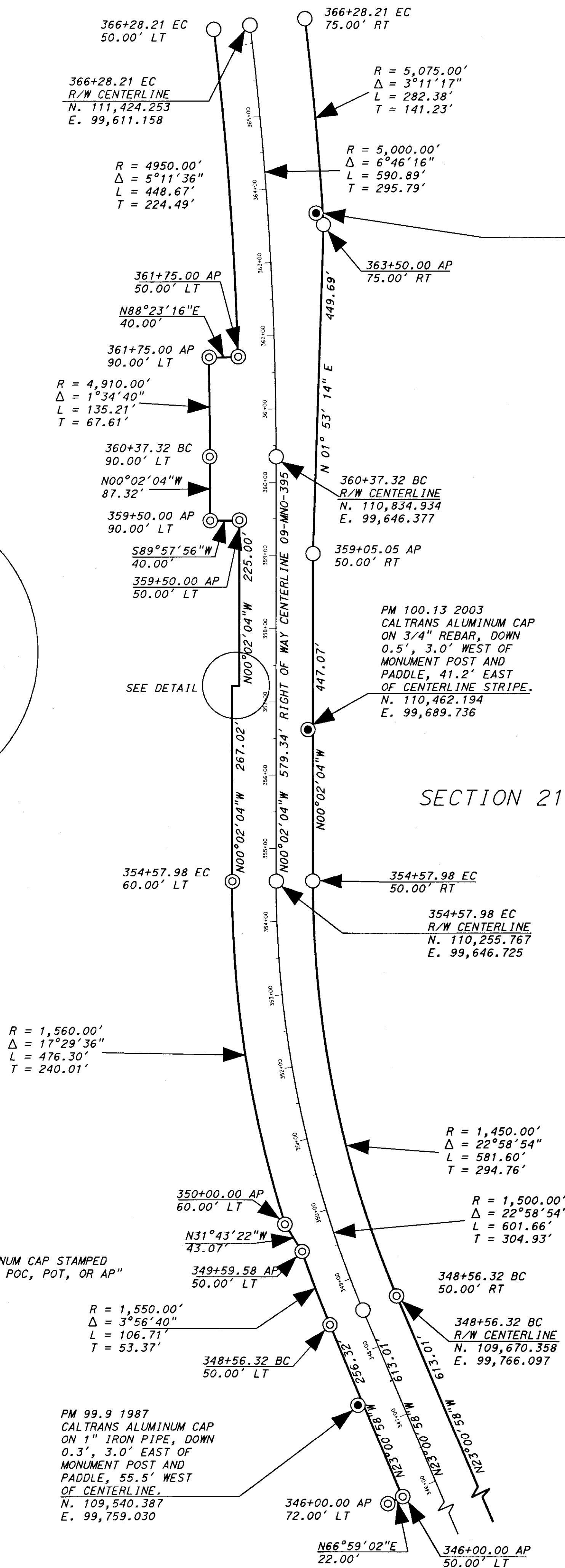
DETAIL

LEGEND:

- FOUND CALTRANS "C" MONUMENT
- CALCULATED POSITION
- ⊙ SET 3/4" REBAR W/CALTRANS ALUMINUM CAP STAMPED "R/W 2005" WITH EITHER "BC, EC, POC, POT, OR AP"
- FOUND MONUMENT AS NOTED
- ◆ FOUND LAND NET CORNER AS NOTED



ONE INCH EQUALS 100 FEET
CGF = 0.9997017



PM 100.26 2003
CALTRANS ALUMINUM CAP
ON 3/4" REBAR, DOWN
0.4', 3.0' WEST OF
MONUMENT POST AND
PADDLE, 61.7' EAST
OF CENTERLINE STRIPE.
N. 111,167.655
E. 99,700.776

SECTION 22

SECTION 21

APPROXIMATE SECTION LINE