

CORNER RECORD

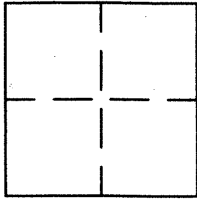
BK

72

PG

53

APN No. _____ (Optional) Document Number **CR 7543**
Unincorporated _____ Eden Township County of **Alameda**, California
Brief Legal Description **In Mines Road, RS 1274 BK19 PG 67**



CORNER TYPE

Government Corner ☐ Control ☐
Meander ☐ Property ☐
Rancho ☐ Other ☐
Date of Survey **07/02/2014**

COORDINATES (Optional)

N. **2,055,300.1**
E. **6,211,516.1**
Zone **3** NAD27 ☐ NAD83 ☒
NAD 83 Epoch _____
Elev. _____

Corner - Left as found ☐ Found and tagged ☐ Established ☐ Reestablished ☐ Not Found ☒

In compliance with Section 8771 of the Professional Land Surveyors' Act, this corner record is being filed to
ESTABLISH ____ / REESTABLISH ____ the position of an existing monument PRIOR ☒ / SUBSEQUENT ____
to street or highway reconstruction. (Use this portion only when applicable.)

Identification and type of corner found: Evidence used to identify or procedure used to establish or reestablish the corner:
Using record map relationships from nearby found monuments, a field survey with RTK-GPS methods was conducted
establishing a calculated record location for the subject monument. At this calculated record location the pavement
surface was thoroughly searched with a magnetic locator, but since no signal was returned detecting the monument's
existence it was concluded to have been destroyed prior to the date of this survey.

A description of the physical condition of the monument as found and as set or reset:

Monument locations are approximate as only lids or magnetic locator signal positions were located. See Page 2.

The above coordinates are sufficient only for establishing the calculated record location for the subject monument.

SURVEYOR'S STATEMENT

This Corner Record was prepared by me or under my direction in conformance with
the Land Surveyors' Act on **9/8** 20 **15**.

Signed Robert A. Machado L.S. or R.C.E. Number **7380**



COUNTY SURVEYOR'S STATEMENT

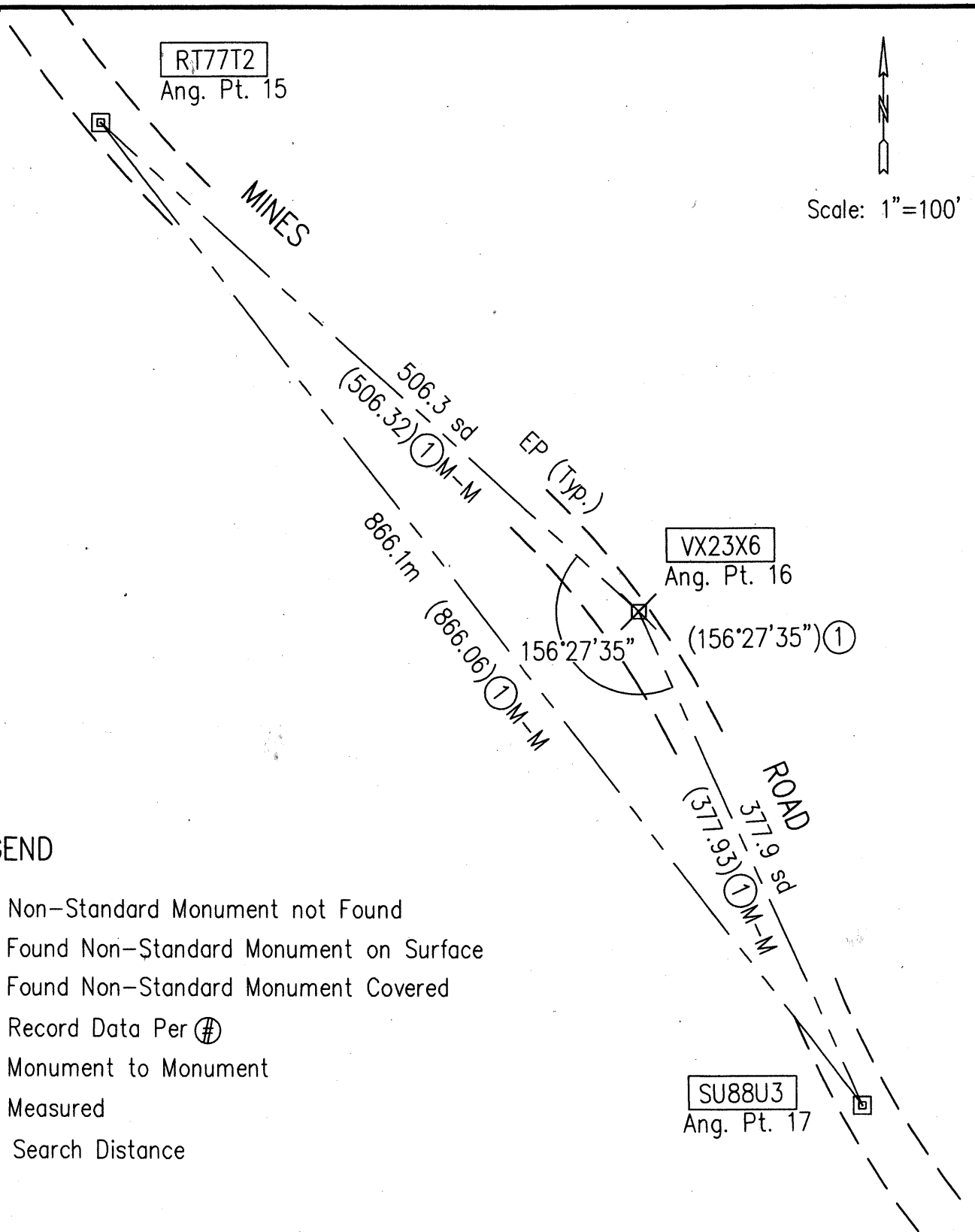
This Corner Record was received _____ 20 **15** and examined
and filed **9-11** 20 **15**.

Signed [Signature] Title **County Surveyor**



County Surveyor's Comment _____

Job Number: R 23433 Spec No: 2280



LEGEND

- ⊗ Non-Standard Monument not Found
- ⊠ Found Non-Standard Monument on Surface
- ⊡ Found Non-Standard Monument Covered
- () Record Data Per #
- M-M Monument to Monument
- m Measured
- sd Search Distance

REFERENCES

- ① R/S 1274 19 M 67 6/19/1995

DRAWN BY: Robert Machado