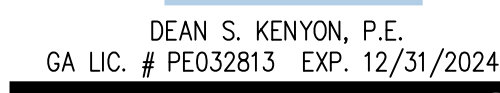


PLUMBING SPECIFICATIONS

19. GUARANTEE THE WORK AND THE INSTALLATION FOR ONE YEAR
20. ALL SAW CUT AND PATCH BACK OF FLOOR TO MATCH EXISTING
- OWNER'S SOILS ENGINEER'S RECOMMENDATIONS

*SCH. 40 PVC IS PREFERRED IF APPROVED BY AUTHORITY HAVING JURISDICTION.
PROVIDE SCHEDULE 40 PVC FOR ALL WASTE VENT PIPING & FITTINGS.



PANDA HOME SQUARE 2600 R2

PIPE SIZE	GPM	VELOCITY FT/SEC	FIXTURE UNITS	
			F - TANK	F - VALVE
1/2"	2.5	3.5	2 F.U. @ psi	6.0 F.U. @ psi
3/4"	6.6	4.4	8 F.U. @ psi	F.U. @ psi
1"	13.4	5.2	19 F.U. @ psi	F.U. @ psi
1-1/4"	23.3	5.9	37 F.U. @ psi	6 F.U. @ psi
1-1/2"	36.7	6.6	74 F.U. @ psi	23 F.U. @ psi
2"	76.4	7.9	254 F.U. @ psi	132 F.U. @ psi

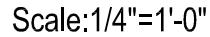
** PRESSURE REGULATING VALVE MODEL: N/A SIZE N/A

○ PLUMBING KEY NOTES

1. 1-1/4" G DOWN TO WATER HEATER W/ SOV. (SHUT OFF VALVE).
2. (2) 3/4" G DOWN TO RICE COOKER W/ SOV. PROVIDE 6" LENGTH OF RIGID PIPE BETWEEN RICE COOKER AND FLEXIBLE GAS LINE.
3. CW SHUT OFF BALL VALVE LOCATED WITHIN WALL. REFER ARCH INTERIOR ELEVATIONS FOR HEIGHT. PROVIDE ACCESS PANEL.
4. 1/2" G DOWN TO DEEP FRYER W/ SOV.
5. 1/2" G DOWN TO CHINESE RANGE "20A OR 20B" W/ SOV. LOCATE STUB OUT BEHIND THE END OF

°C DOWN TO WATER HEATER W/ SOV (SHUT OFF VALVE)

- KEY NOTES SHOWN ON P-100 AND P-101



PROFESSIONAL ENGINEERS



GREASE INTERCEPTOR CALCULATION			
FIXTURE	QTY.	FU	FU TOTAL
FLOOR DRAIN/FLOOR SINK 3" TRAP	8	5	40
TRENCH DRAIN 3" TRAP	1	5	5
MOP SINK	1	2	2
TOTAL			47 (24 GPM)

FIXTURE UNIT VALUE BASED ON IPC, SECTION 709

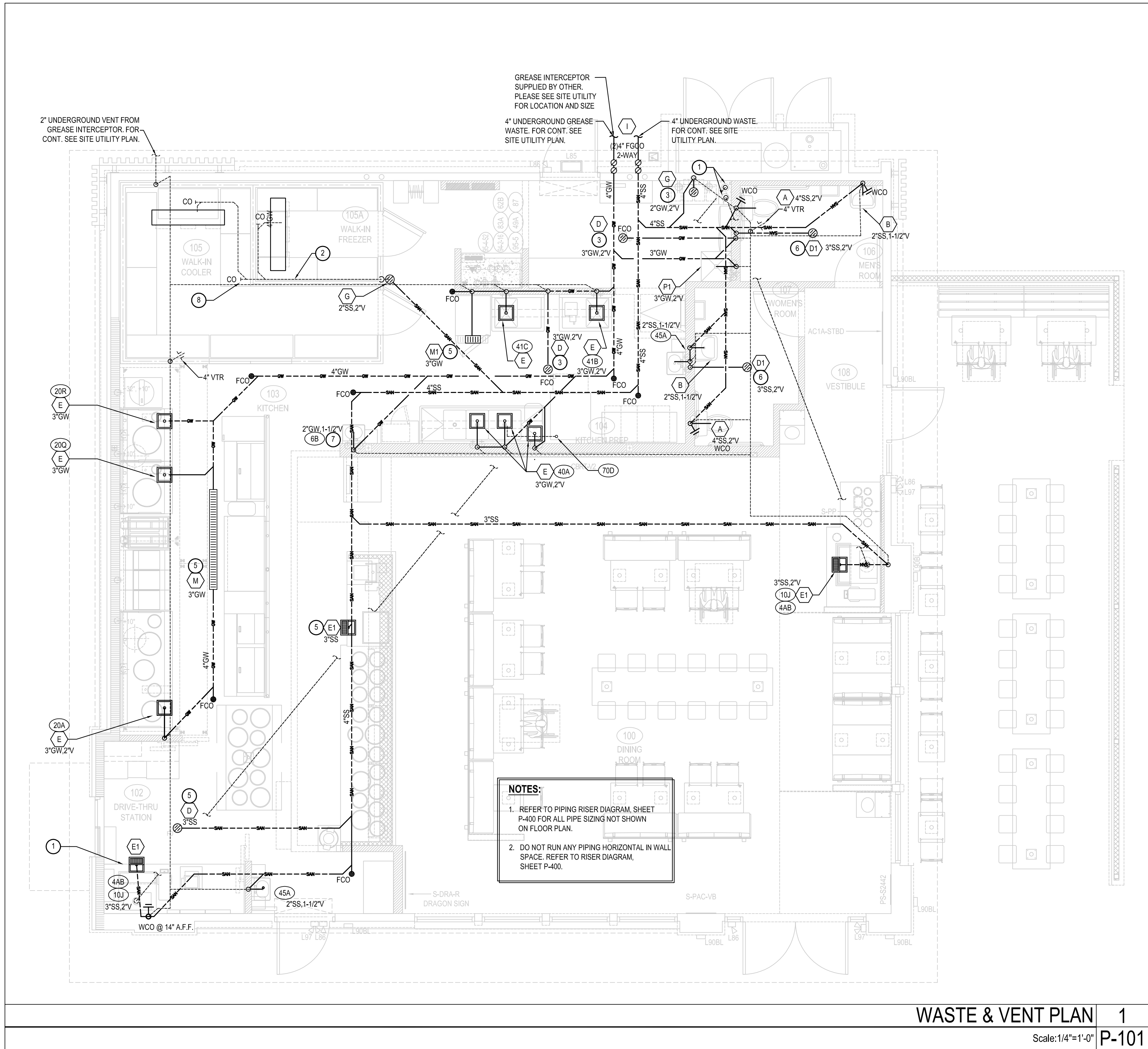
FLOW THROUGH TYPE GREASE INTERCEPTOR MINIMUM SIZE WILL BE 50 POUND GREASE CAPACITY PER IPC, TABLE 1003.34.1.

GRAVITY TYPE GREASE INTERCEPTOR SIZE BASED ON 24 GPM WITH 30 MINUTE RETENTION TIME (24*30=720) TO BE SIZED AT 1000 GALLONS.

⊙ PLUMBING KEY NOTES

1. 1-1/4" G DOWN TO WATER HEATER W/ SOV. (SHUT OFF VALVE).
2. 2) 3/4" G DOWN TO RICE COOKER W/ SOV. PROVIDE 6" LENGTH OF RIGID PIPE BETWEEN RICE COOKER AND FLEXIBLE GAS LINE.
3. CW SHUT OFF BALL VALVE LOCATED WITHIN WALL. REFER ARCH INTERIOR ELEVATIONS FOR HEIGHT. PROVIDE ACCESS PANEL.
4. 1 1/2" G DOWN TO DEEP FRYER W/ SOV.
5. 1 1/2" G DOWN TO CHINESE RANGE "20A OR 20B" W/ SOV. LOCATE STUB OUT BEHIND THE END OF RANGE FOR EASY ACCESS.
6. 1" G DOWN TO CHINESE RANGE "200Q" OR "20R" W/ SOV.
7. EXHAUST & INTAKE VENTS UP TO ROOF. COORDINATE WITH MECHANICAL DRAWINGS AND DETAIL #10 ON SHEET P-500.
8. ROUTE NEW PIPING IN WALL.
9. GAS ANSUL VALVE PROVIDED BY OWNER (G.C. CALL CAPTIVEWARE FOR DELIVERY). INSTALL GAS ANSUL VALVE AS CLOSE TO EXTERIOR WALL AS ALLOWED PER LOCAL CODE.
10. 1/2" WATER PIPE UP, VALVE AND CAP.
11. 1" G UP TO ROOF W/ SOV. FOR ROOF TOP UNITS.
12. 3/8" CW TO TRAP PRIMER. PROVIDE WALL ACCESS PANEL. RUN 1/2" CW BELOW FLOOR TO FLOOR DRAIN. SEE DETAIL #17 ON PLAN P-500.
13. 3/4" GAS DOWN FOR EQUIPMENT.
14. SHUT OFF VALVE W/ HANDLE AT 11'-0" ABOVE FINISH FLOOR, EASILY ACCESSIBLE. G.C. TO INSTALL LOCATION INDICATOR STICKER PROVIDED BY PANDA EXPRESS
15. 1 1/2" GAS UP TO MAKE-UP AIR UNIT ON ROOF.
16. 3/8" HW & CW TO FAUCET (408) FOR CHEMICAL FEED SYSTEM. LEFT SIDE PLUMBING ROUGH AT 24" OFF LEFT END OF SINK. SEE DETAIL 7 SHEET P-500
17. GAS HEADER - INSTALL TIGHT TO WALL AND TIGHT TO BOTTOM OF TRUSSES.
18. COLD WATER MANIFOLD "C" BELOW CEILING. REF ARCH ELEVATIONS
19. COLD WATER MANIFOLD "D" BELOW CEILING. REF ARCH ELEVATIONS
20. HOT WATER MANIFOLD "A" BELOW CEILING. REF ARCH ELEVATIONS
21. SEE HOT WATER SYSTEM DIAGRAM 5/P-400
22. 3/4" GALVANIZED PIPE, THREADED AT BOTH ENDS. ROUTE ABOVE CEILING FROM FRYERS TO GREASE STORAGE TANK.
 - ROUGH-IN HEIGHT AT STORAGE ROOM: 90" AFF
 - ROUGH-IN HEIGHT AT COOKLINE: 18" AFF
 - VERTICAL RISE AT FRYER LOCATION HIGH AS POSSIBLE, BUT NOT TO EXCEED 15' IN HEIGHT
 - SLOPE OF PIPE TO BE SLOPE AS POSSIBLE BUT NO LESS THAN 1/4" PER LINEAR FOOT
23. 1/2" CW UP TO "0" ROOF HYDRANT, LOCATE PER OWNER REQUIREMENTS
24. CONNECTIONS TO DISHWASHER TO BE LOCATED UNDER THE DRAIN BOARD OF 3-COMP SINK. SEE DETAIL 7 ON SHEET P-500.

KEY NOTES SHOWN ON P-100 AND P-101



KPI ENGINEERING, INC.

PROFESSIONAL ENGINEERS

"No matter the Scope, KPI has YOU Covered"

3203 QUEEN PALM DRIVE
TAMPA, FLORIDA 33619
PHONE (813) 241-6488
FAX (813) 241-6498

Board of Professional Engineers - License # PEF005267



PANDA EXPRESS, INC.
1683 Walnut Grove Ave.
Rosemead, California
91770
Telephone: 626.799.9898
Facsimile: 626.372.8288

All ideas, designs, arrangement and plans indicated or represented by this drawing are the property of Panda Express Inc. and were created for use on this specific project. None of these ideas, designs, arrangements or plans may be used by or disclosed to any person, firm, or corporation without the written permission of Panda Express Inc.

REVISIONS:

[illegible]

ISSUE DATE:

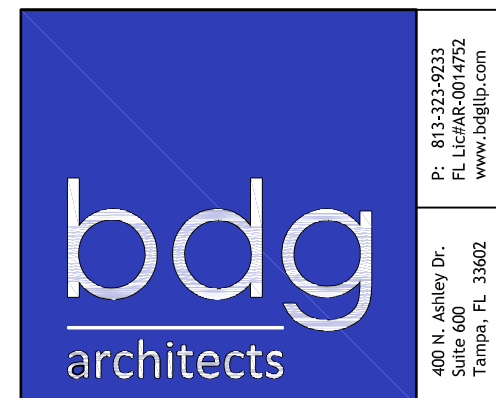
CHECK SET	06-12-23
PERMIT/BID	06-16-23

DRAWN BY: BDG

PANDA PROJECT #: TBD

PANDA STORE #: TBD

ARCH PROJECT #: 229201



Dean S Kenyon

Digitally signed by Dean S Kenyon
DN:
c=us, o=Kpi Engineering, ou=Dean S Kenyon, email=Dean.S.Kenyon@kpiengineering.com, cn=Dean S Kenyon
Date: 2023.06.30 15:07:49 -0400

DEAN S. KENYON, P.E.
GA LIC. # PE032813 EXP. 12/31/2024

GA LIC. # PE032813 EXP. 12/31/2024

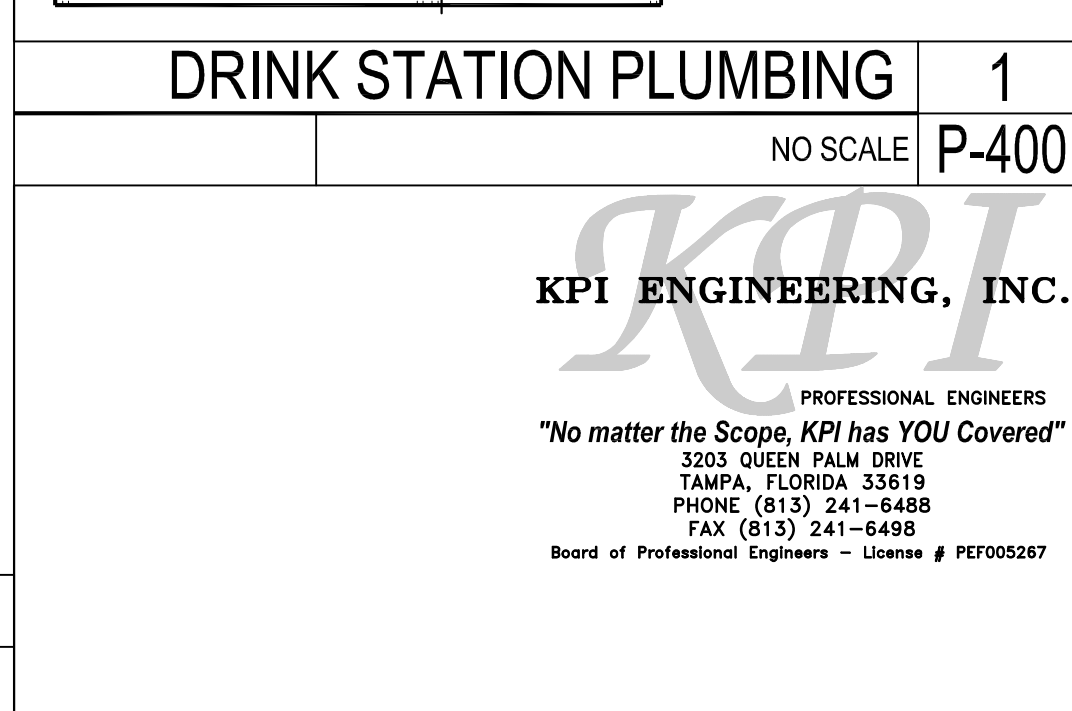
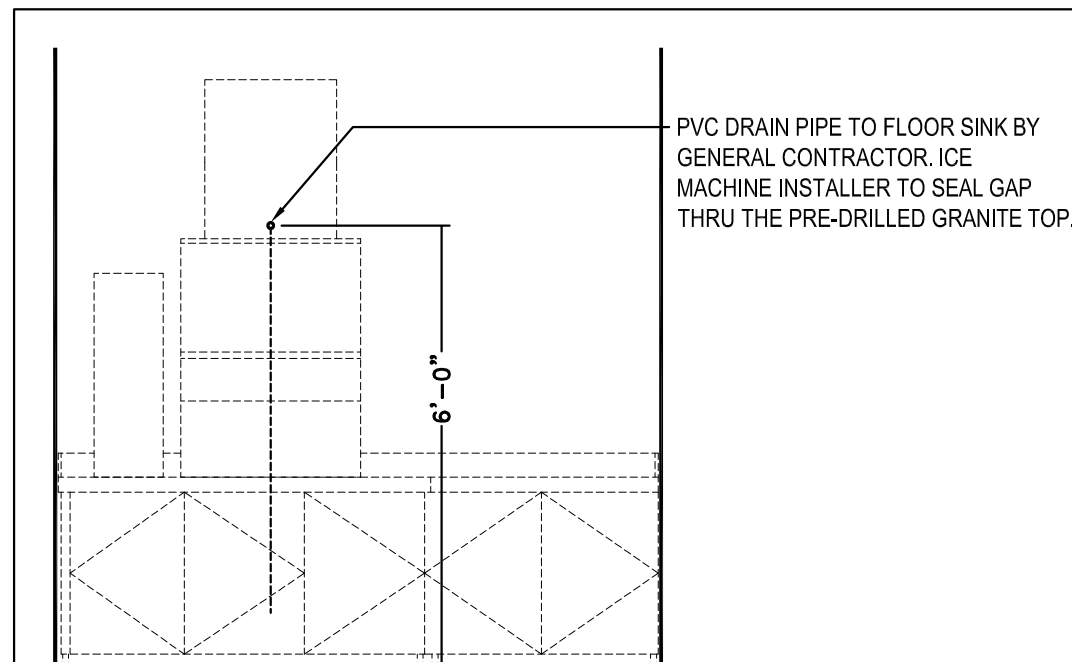
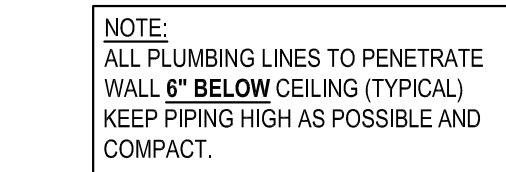
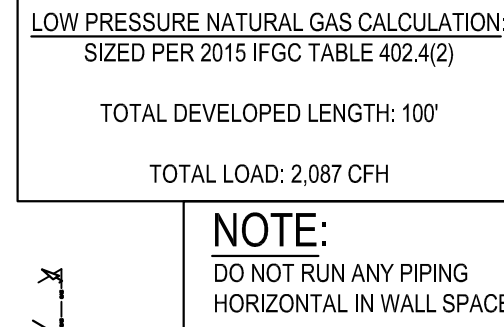
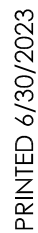
PANDA EXPRESS

PANDA HOME SQUARE 2600
Monroe Pavillion, Highway 78
Monroe, GA 30655

P-101

WASTE AND VENT PLAN

PANDA HOME SQUARE 2600 R2



All ideas, designs, arrangement and plans indicated or represented by this drawing are the property of Panda Express Inc. and were created for use on this specific project. None of these ideas, designs, arrangements or plans may be used by or disclosed to any person, firm, or corporation without the written permission of Panda Express Inc.

REVISIONS:

ISSUE DATE:

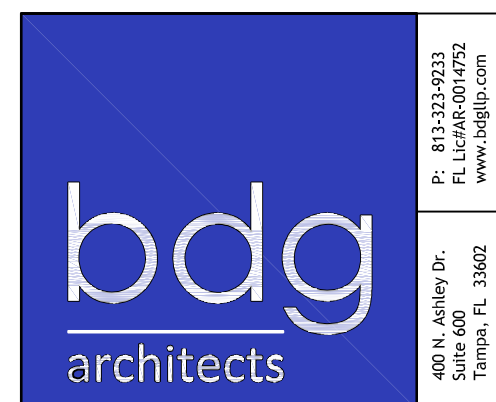
CHECK SET	06-12-23
PERMIT/BID	06-16-23

DRAWN BY: BDG

PANDA PROJECT #: TBD

PANDA STORE #: TBD

ARCH PROJECT #: 229201



Dean S Kenyon

DEAN S. KENYON, P.E.
GA LIC. # PE032813 EXP. 12/31/2024

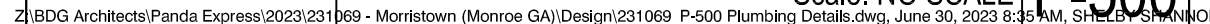
PANDA EXPRESS

PANDA HOME SQUARE 2600
Monroe Pavillion, Highway 78
Monroe, GA 30655

P-400

WATER, GAS, WASTE & VENT RISER DIAGRAMS

PANDA HOME SQUARE 2600 R2

[illegible]

DRAWN BY:	BDG
<div></div>	
PANDA PROJECT #:	TBD
PANDA STORE #:	TBD
ARCH PROJECT #:	229201



PANDA EXPRESS
PANDA HOME SQUARE 2600
Monroe Pavillion, Highway 78
Monroe, GA 30655

PANDA HOME SQUARE 2600 R2