

This tutorial is written by Denise D. on 9th July 2017
from my own ideas.

Any resemblance to other tutorials is co-incidental and unintentional.

You may share my tutorials with other groups.

All I ask is that you advise me and credit for the tutorial is given to me and
linked to

<http://escapingtonsp2.altervista.org/Home/homeb.html>

and

<https://groups.yahoo.com/neo/groups/EscapingtonPSP/info>

Please do not upload any of my completed Tutorial images onto sites
such as Fotki, Pinterest, Photobucket or similar

LOVE IT



Use this pencil to follow the steps
hold down left click to grab and move it



Click on the Box to download Supplies

To print click on Printer



Supplies

Images:

Denise's Roses.png created from 4053--luzcristina.pspimage

You can join this Group at:

<https://es.groups.yahoo.com/neo/groups/TubesPSP-LuzCristina/info>

picture backgro8undf.pspimage

BetteDshirleyjeanlace2.pspimage

wd-allaboutlace52.psp (this group no longer exists)

coins_chris.pspimage

These images were obtained from the Internet

If you are the owner of this image, please contact me
so that credit can be given to you

Texture:

esp_tan_Patt_9

Pattern;

goldfill.jpg

Selections:

D.D.Lovelt

Mask:

Chickmask_0183

Font:
Splendid ES.ttf

Plugins:
Eye Candy 3 OR Eye Candy 4000
MuRa's Meister
MuRa's Seamless
VM Natural (Import into Filters Unlimited 2.0)
Simple
AAA Frames

Found here:
<http://www.saturnelladesign.fr/pages/filtres.htm>
<http://janaly.com/Filtres/Filtre.html>
<http://www.maidiregrafica.eu/paginafiltri/filtri.html>

Notes:
This Tutorial was created in PSP X9.... **other versions may need adjustment**

Some of the graphics may be from Free to Use sites or Share Groups.

If you are the creator of one of these please let me know so that appropriate credit can be given.

No infringement of copyright is intended or intentional.

Before opening PSP, download plugins and install

Place Pattern in PSP Pattern Folder

Place Texture in PSP Texture Folder

Place Mask in PSP Mask Folder

Place Selection in PSP Selection Folder

Install Font

Open graphics in PSP, duplicate (Shift D) and close the original.

Please Note: Offset settings provided in this tutorial may vary according to size of your image.

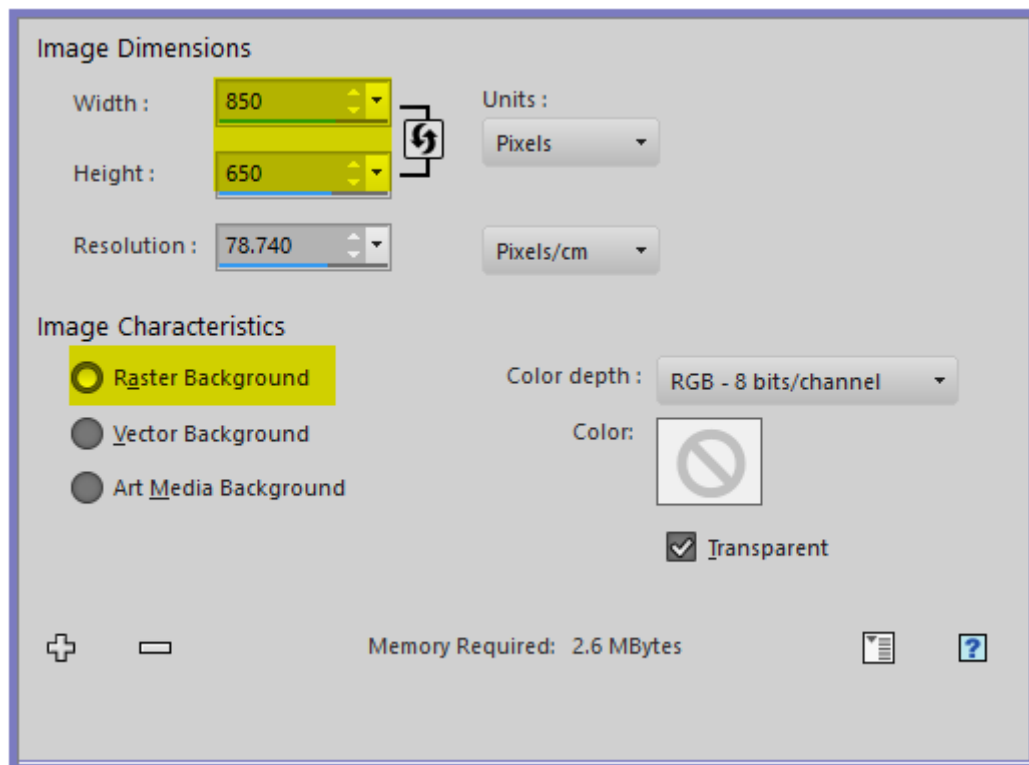
Please adjust to suit.

The settings remain the same throughout this Tutorial unless otherwise stated.

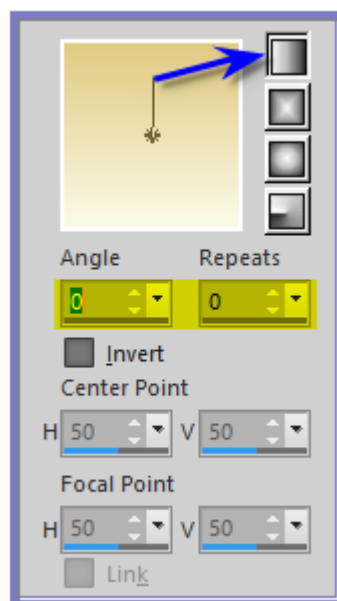
Set your Foreground colour to #fbfae7

Set your Background colour to #e1ca81

Step One:
File/New/New Image 850 pixels x 650 pixels as follows:



Change Foreground Colour to Foreground/Background/Linear Gradient as follows:



Flood Fill with Gradient

Step Two:

Layers/New Raster Layer

Selections/Select All

Maximise picture background.pspimage

Edit/Copy Edit/Paste into Selection

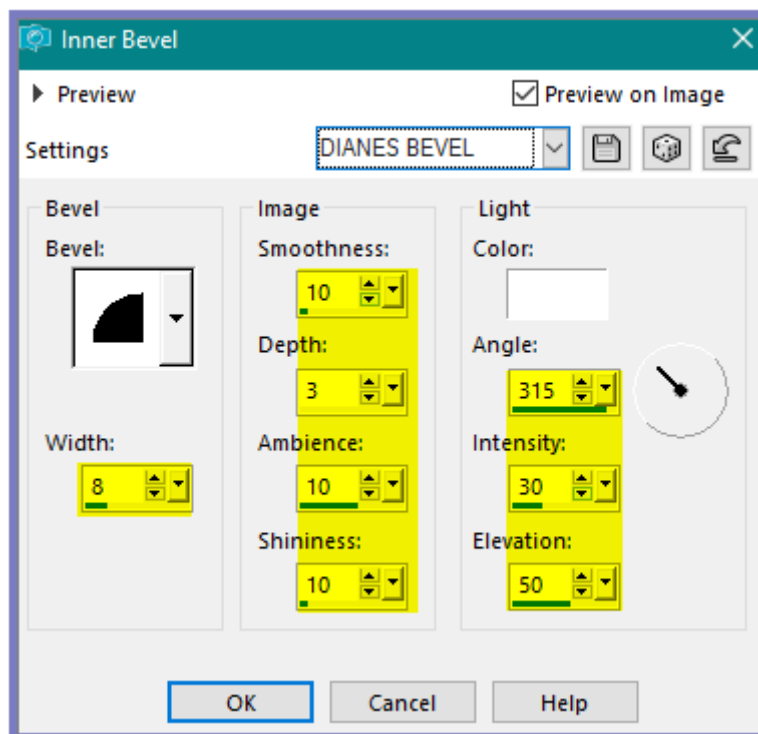
Change Blend Mode to Overlay and Opacity to 50%
Adjust/Sharpness/Sharpen
Selections/Select None
Layers/Merge Down
Change Background Colour to Pattern goldfill as follows:



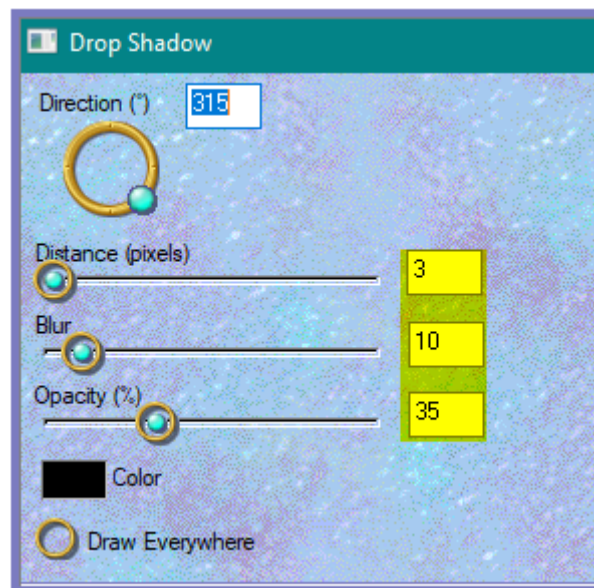
Selections/Select All
Layers/New Raster Layer
Flood Fill with Pattern
Selections/Modify/Contract 5 pixels
Edit/Clear

Step Three:

Selections/Invert
Effects/3D Effects/Inner Bevel as follows:

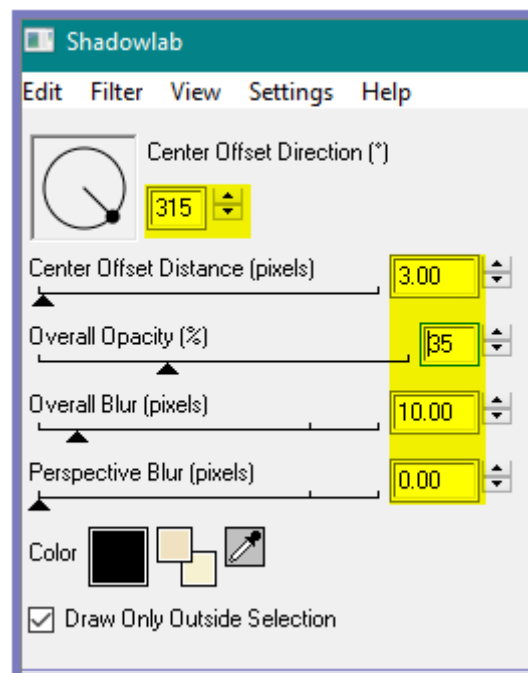


Effects/Plugins/Eye Candy 3.0/Drop Shadow as follows:



OR

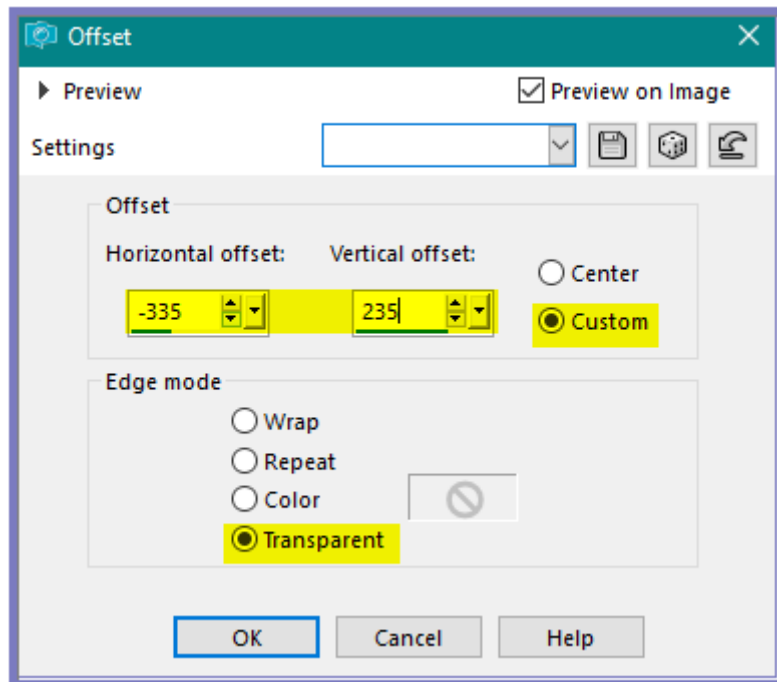
Effects/Plugins/Eye Candy 4000/Shadowlab as follows:



Selections/Select None

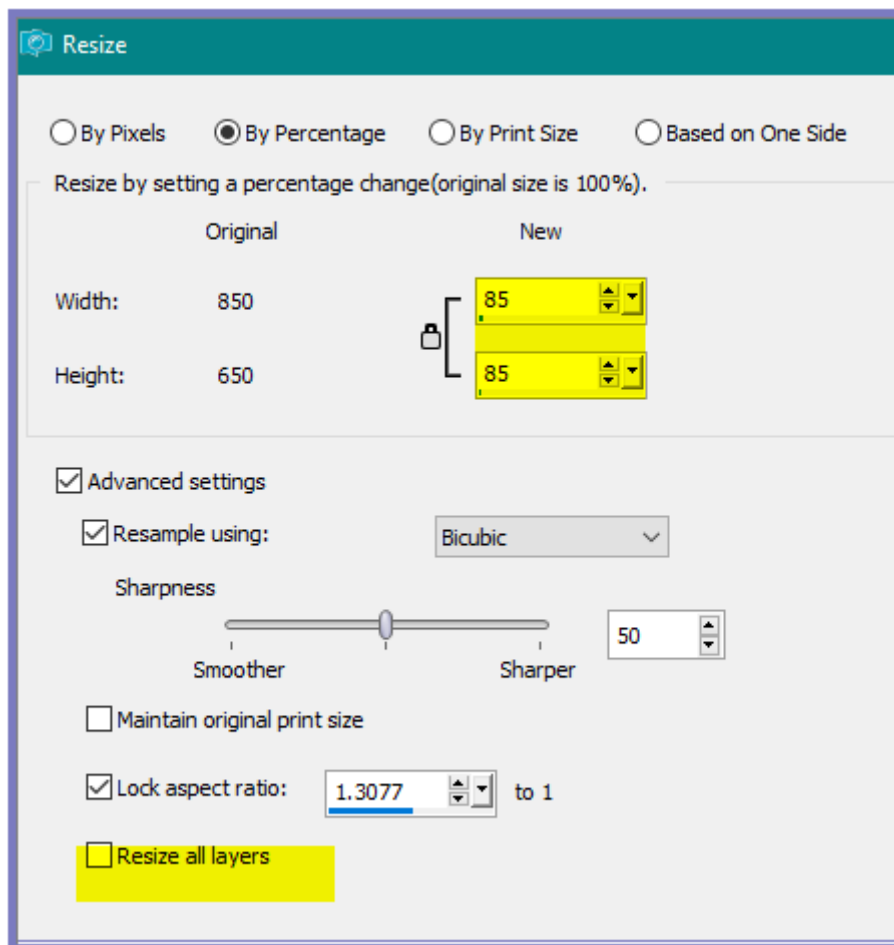
Step Four:

Maximise BetteDshirleyjeanlace2.pspimage
Edit/Copy Edit/Paste as New Layer
Image/Free Rotate/45 degrees/Right
Effects/Image Effects/Offset as follows:



Adjust/Sharpness/Sharpen
Effects/Plugins/Eye Candy 3.0/Drop Shadow
OR
Effects/Plugins/Eye Candy 4000/Shadowlab
Effects/Plugins/Simple/Top Left Mirror
Layers/Merge/Merge All Flatten

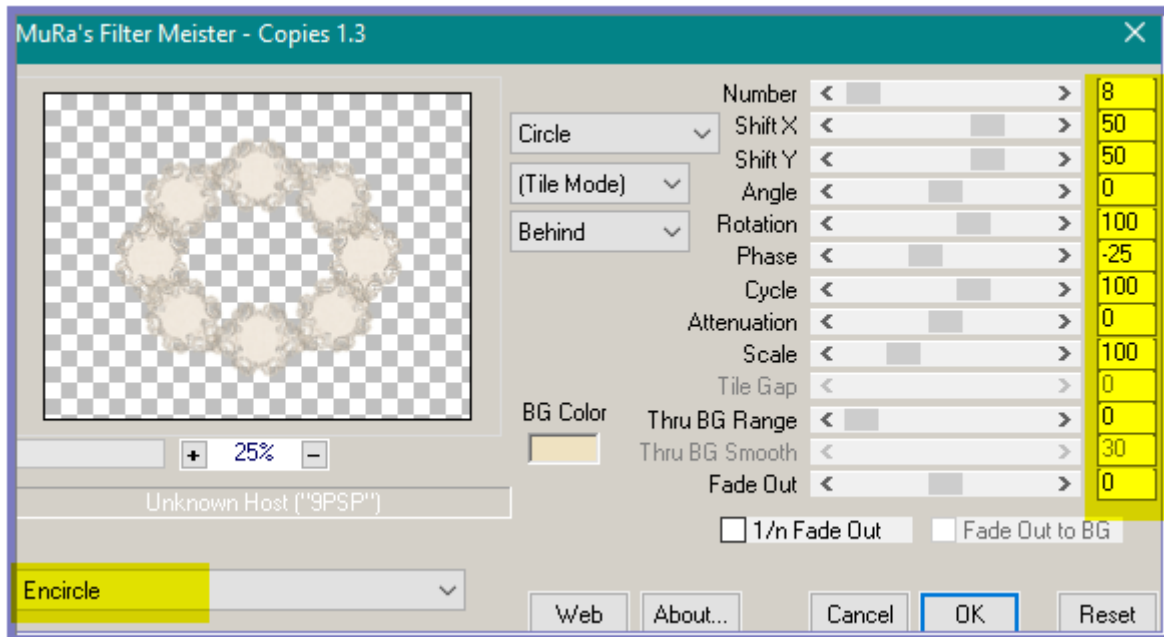
Step Five:
Layers/Duplicate
Image/Resize/85% as follows:



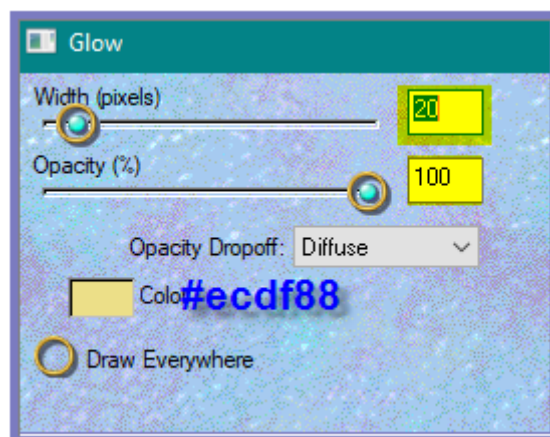
Adjust/Sharpness/Sharpen More
 Image/Mirror/Horizontal OR Image/Mirror
 Layers/Duplicate
 Image/Resize/90%
 Adjust/Sharpness/Sharpen
 Effects/Plugins/Eye Candy 3.0/Drop Shadow
 OR
 Effects/Plugins/Eye Candy 4000/Shadowlab
 Select Copy of Background
 Repeat Drop Shadow/Shadowlab

Step Six:

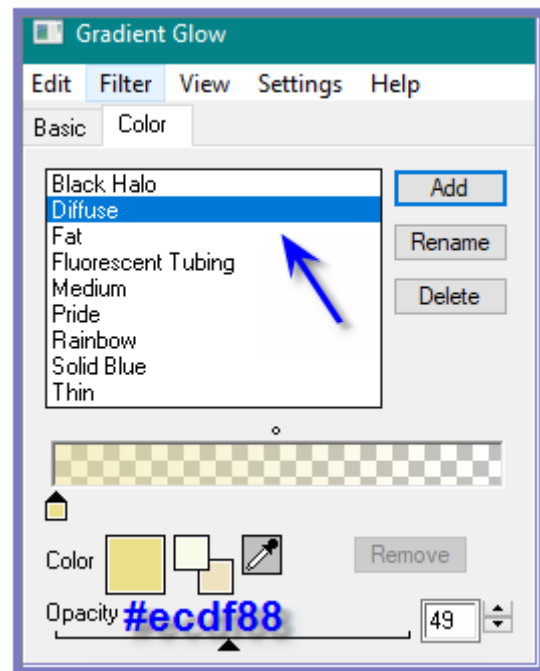
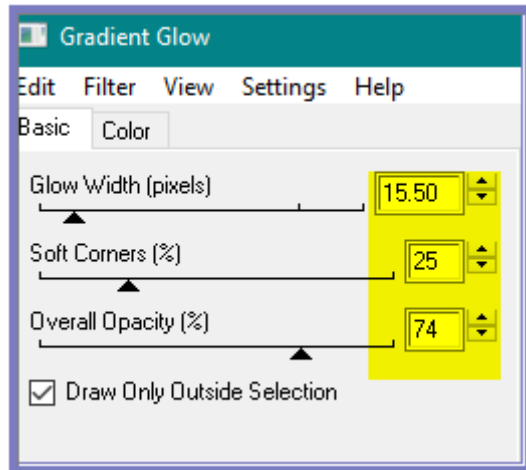
Select Copy (2) of Background
 Maximise BetteDshirleyjeanlace2.pspimage
 Edit/Copy Edit/Paste as New Layer
 Effects/Plugins/MuRa's Meister/Copies/Encircle as follows:



Adjust/Sharpness/Sharpen More
Effects/Plugins/Eye Candy 3.0/Glow as follows:



OR
Effects/Plugins/Eye Candy 4000/Gradient Glow as follows:



Step Seven:

Maximise wd-allaboutlace52.psp

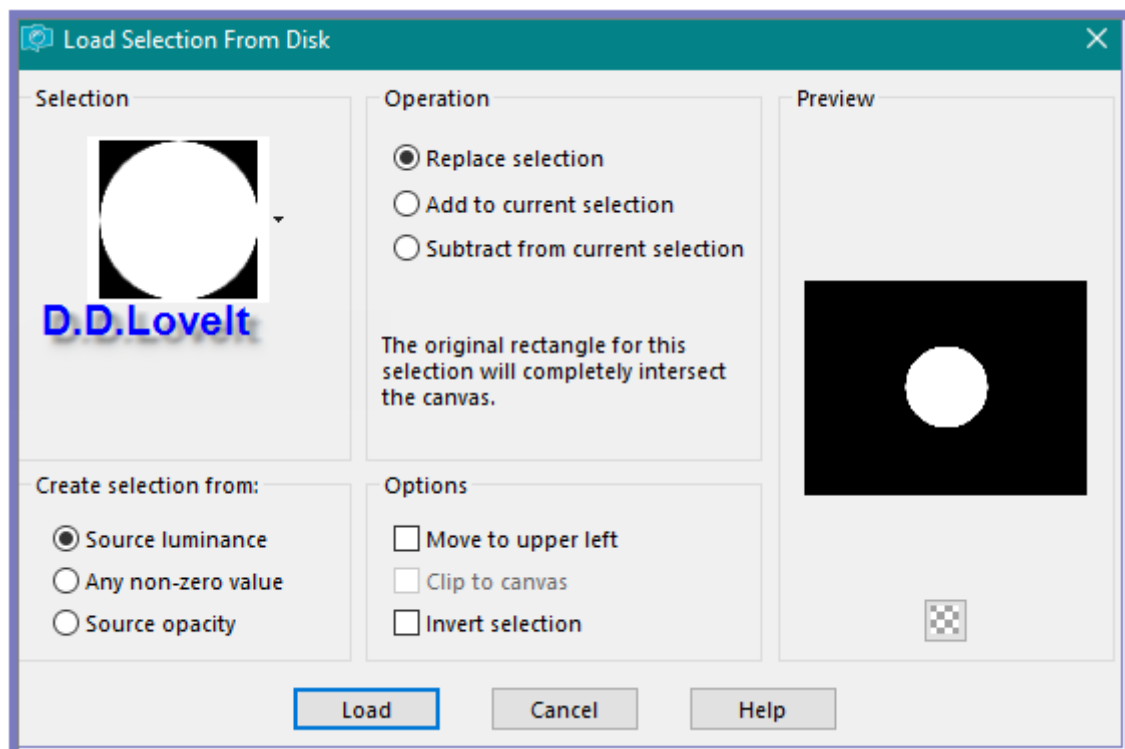
Edit/Copy Edit/Paste as New Layer

Image/Resize/70%

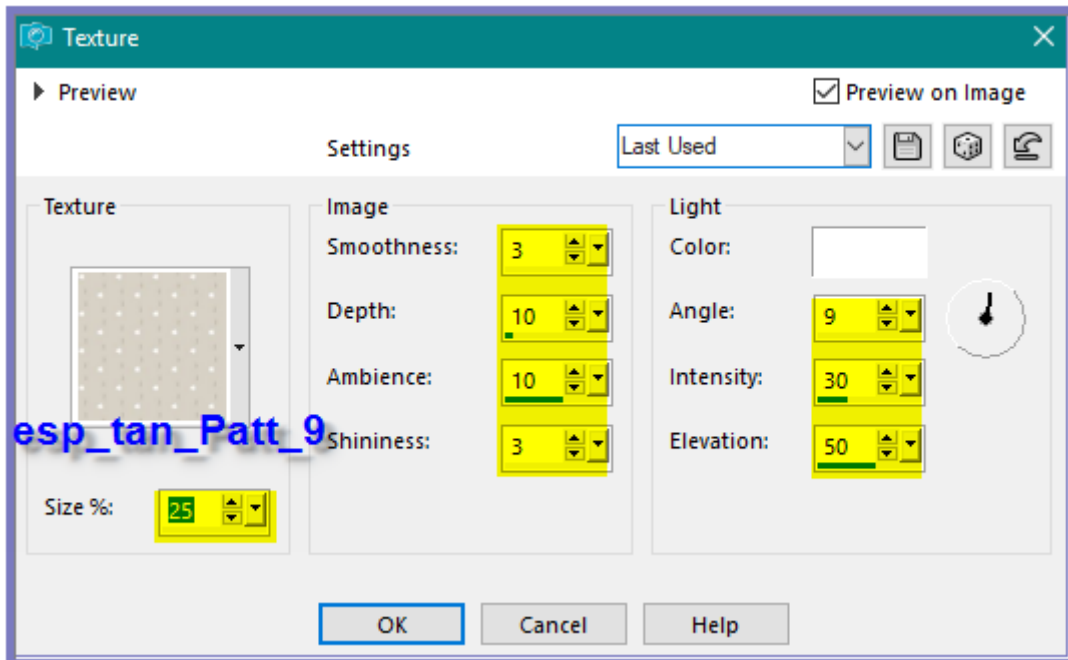
Change Opacity to 70%

Adjust/Sharpness/Sharpen More

Selections/Load/Save Selection D.D.Lovelt from Disk as follows:



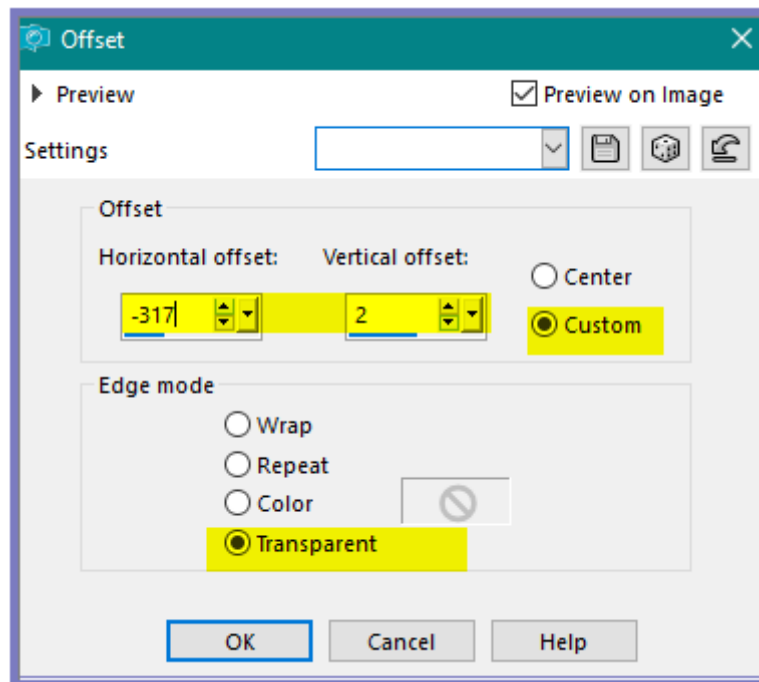
Layers/New Raster Layer
Layers/Arrange/Move Down
Flood Fill with Background Pattern
Effects/Texture Effects/Texture esp_tan_Patt_9 as follows:



Selections/Select None

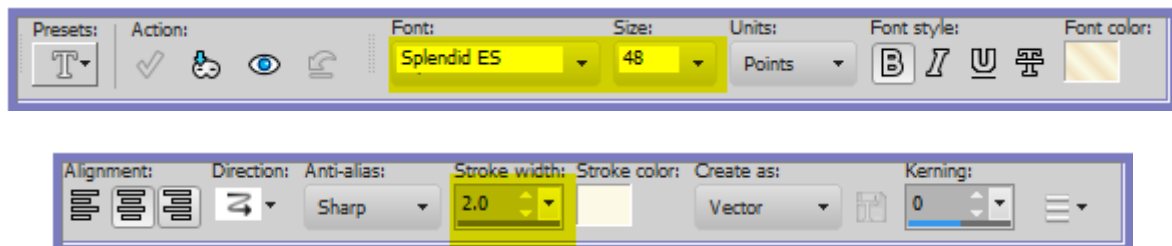
Step Eight:

Maximise coins_chris.pspimage
Edit/Copy Edit/Paste as New Layer
Image/Resize/125%
Effects/Edge Effects/Enhance
Effects/Image Effects/Offset as follows:



Layers/Duplicate
 Image/Mirror/Horizontal OR Image/Mirror
 Layers/Merge/Merge Down
 Effects/Plugins/Eye Candy 3.0/Drop Shadow
 OR
 Effects/Plugins/Eye Candy 4000/Shadowlab

Step Nine:
 Select Raster 2
 Text Tool with the following settings



Settings may vary according to your version of PSP
 Write:

Love

See my image for placement

Convert to Raster Layer

Effects/Plugins/MuRa's Seamless/Emboss at Alpha/Default Settings

Effects/Plugins/Eye Candy 3.0/Glow

OR

Effects/Plugins/Eye Candy 4000/Gradient Glow

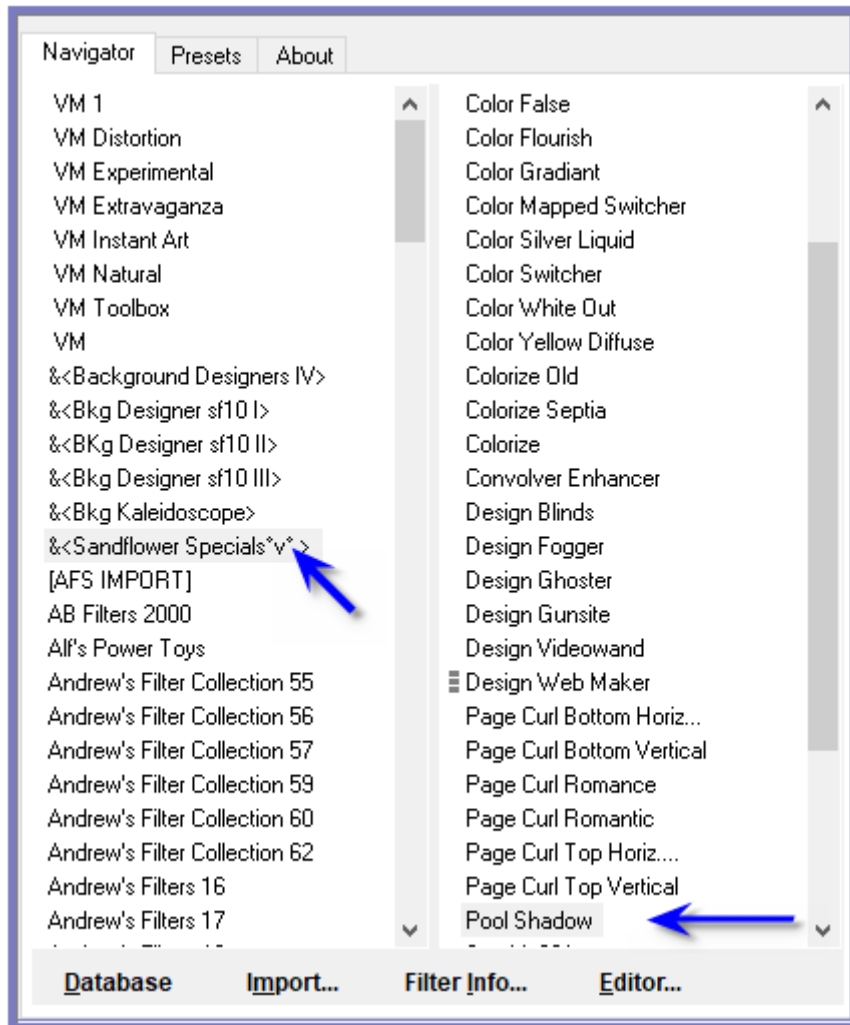
Reduce the size of the text to 24 (or similar)

Write /
See my image for placement
Convert to Raster Layer
Effects/Plugins/MuRa's Seamless/Emboss at Alpha/Default Settings
Effects/Plugins/Eye Candy 3.0/Glow
OR
Effects/Plugins/Eye Candy 4000/Gradient Glow

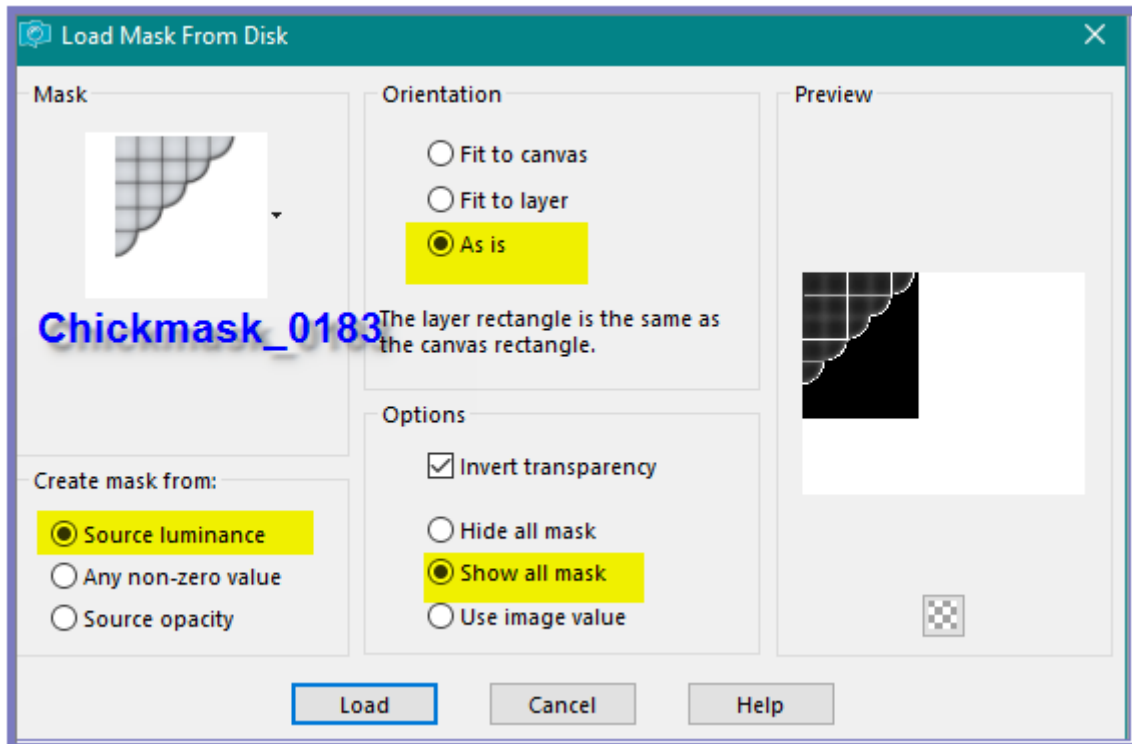
Step Ten:
Image/Add Borders/5 pixels/White
Magic Wand with the following settings:



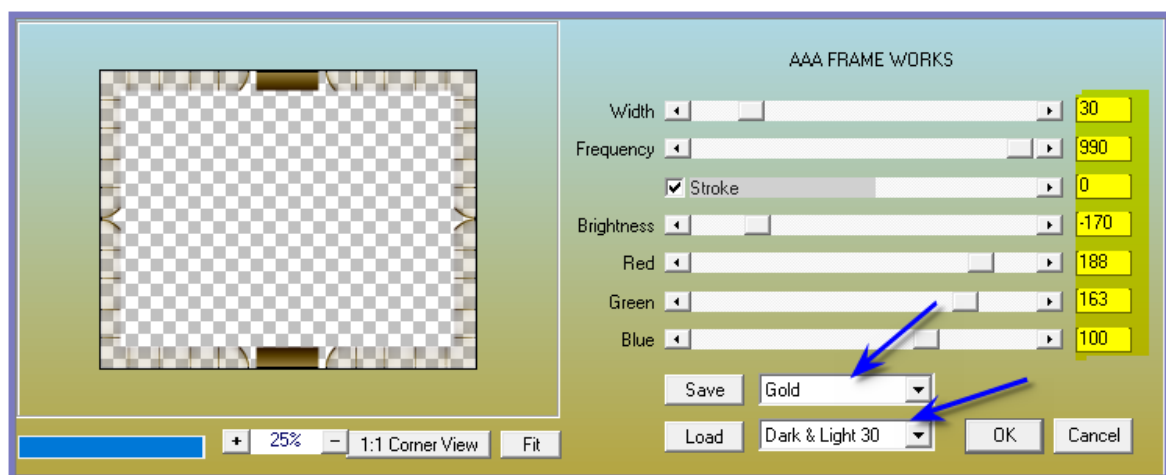
Select border
Flood fill with Gradient
Effects/Plugins/Filters Unlimited 2.0/ <Sandflower Specials
"v"/Poolshadow/Default Settings as follows:



Selections/Select None
 Image/Add Borders 2 pixels/Background Colour
 Image/Add Borders/50 pixel/Foreground Colour
 Select with Magic Wand
 Promote Selection to Layer
 Maximise picture background.pspimage
 Edit/Copy Edit/Paste into Selection
 Layers/New Raster Layer
 Flood Fill with Gradient
 Layers/Load/Save Mask/Load Mask Chickmask_0183 as follows:



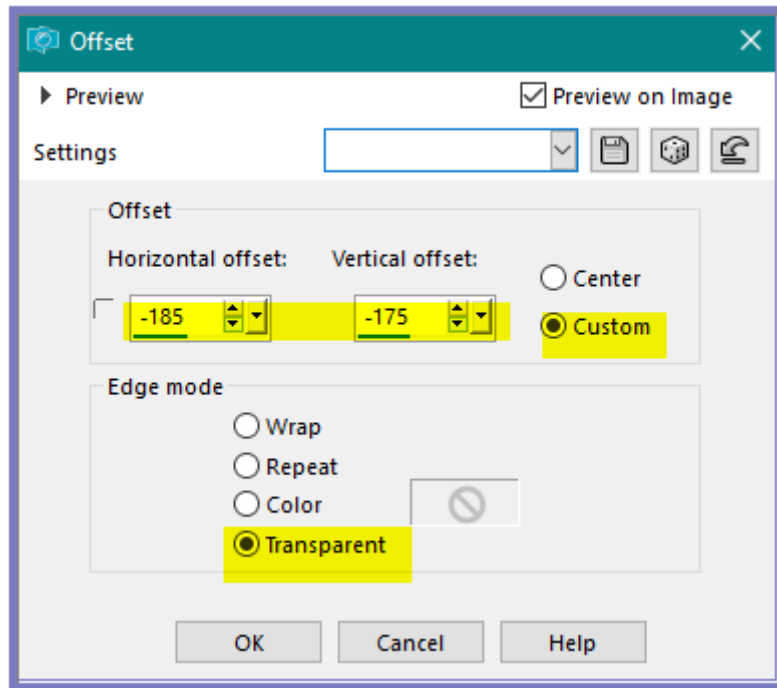
Effects/Edge Effects/Enhance
 Layers/Merge/Merge Group
 Effects/Plugins/Simple/Top Left Mirror
 Effects/Plugins/AAA Frames/Frame Works as follows:



Selections/Select None

Step Eleven:

Maximise Denise's Roses (created using 4053--luzcristina.pspimage)
 Edit/Copy Edit/Paste as New Layer
 Effects/Image/Effects/Offset as follows:



Step Twelve:

Layers/New Raster Layer

Add your Watermark

Layers/Merge All Flatten

Image/Resize/850 pixels wide - height will adjust itself

File/Export/JPEG Optimiser/Compression Value 20

I hope you have enjoyed this tutorial

A big thank you to the ladies who test my Tutorials

TESTERS' RESULTS



BETTY



LILLIAN



ELIZABETH



ALICE T.

FOR OTHER VERSIONS OF THE TUTORIAL
PLEASE GO TO:

<https://goo.gl/photos/b1LSVQ6q3RSHV1Aa8>



*Escaping
to
PSP Group*