

1	PRE-MANUFACTURED ALUMINUM CANOPY BY CANOPY FABRICATOR, RE: STRUCTURAL FOR ANCHORAGE.
2	FUTURE SIGNAGE LOCATION, BY OTHERS. GC TO PROVIDE ELECTRICAL TO ALL LOCATIONS. RE: ELEC. DWGS.
3	WALL MOUNT SCONCE FIXTURE, BOTTOM OF FIXTURE MUST BE 80 INCHES CLEAR MIN. A.F.F., SEE ELECTRICAL & A1.1.
4	36 INCH HOLLOW METAL DOOR, RE: A1.1. & DOOR SCHEDULE.
5	ROOF OVERFLOW OUTLET. TYPICAL 3 PLACES.
6	PREFINISHED METAL COPING.
7	STOREFRONT SYSTEM, DARK BRONZE ANNOXIDIZED ALUMINUM, WITH 1" INSULATED UNITS.
8	ALUMINUM/GLASS DOOR(S), ANNOXIDIZED ALUMINUM DOOR TO MATCH STOREFRONT, RE: DOOR SCHEDULE/ A1.1
9	MODULAR FULL BRICK.
10	METAL CORNICE WITH INTEGRAL DRIPS
11	TELEPHONE DEMARCATION 12"x12" BOX, RE: ELECTRICAL.
12	GAS STUB, COORDINATE WITH UTILITY PROVIDER.
13	WALL PACK LIGHT FIXTURE 8'-0" A.F.F., RE: ELECTRICAL
14	EXPANSION JOINT IN BRICK. PROVIDE BACKER ROD AND SEALANT TO MATCH GROUT.
15	CONTROL JOINT IN EIFS. PER MANUFACTURERS RECOMMENDATION.

ELEVATION KEY NOTES

6

Scale= NO SCALE

A 2.1

EXTERIOR FINISH SCHEDULE

NO	MATERIAL	MANUFACTURER	MFG#	COLOR	FINISH	NOTES
(BRK-1)	BRICK	INTERSTATE BRICK	L-4	TERRA COTTA	MODULAR	
(ST-1S)	STONE SILL	TBD				
(EIFS-1)	E.I.F.S.	STO	STOTHERM ESSENCE SYSTEM	CITYSCAPES SW7076		BUILDING BODY
(MTL-1)	CAP FLASHING	EXCEPTIONAL METALS		IRON ORE		
(ALM-1)	ALUMINUM STOREFRONT	TBD		DARK BRONZE		
(GLZ-1)	GLAZING	TBD				
(GLZ-2)	GLAZING	TBD				SPANDREL GLASS

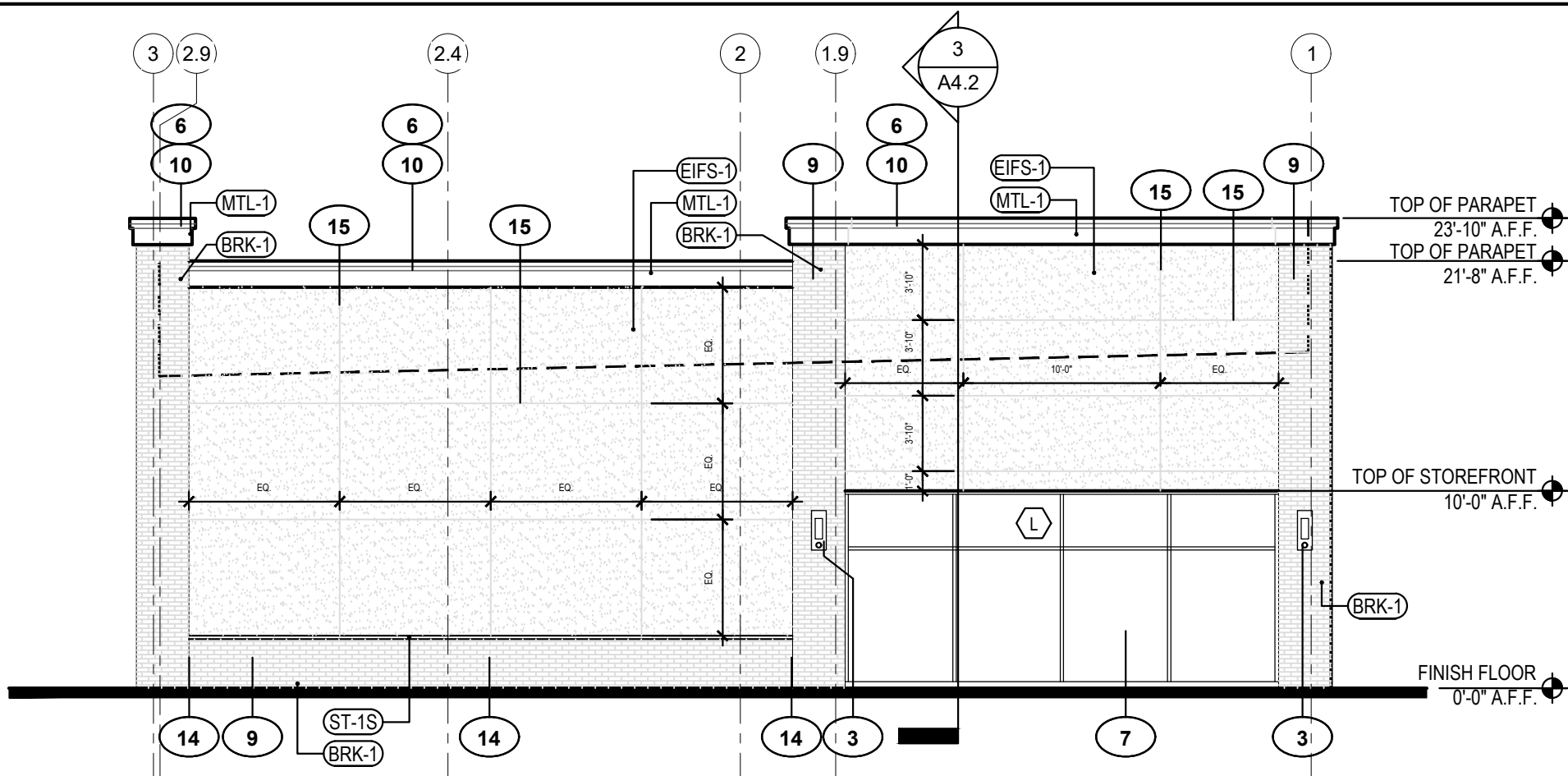
MATERIAL SCHEDULE

5

Scale= 1/8" = 1'-0"

A 2.1

NOTE: ALL DOORS, STOREFRONT GLAZING, DRIVE-THROUGH WINDOW, EXTERIOR LIGHT FIXTURES, CANOPIES AND OTHER ARCHITECTURAL ELEMENTS TO BE PROVIDED AND INSTALLED BY CFT GENERAL CONTRACTOR UNDER THE SCOPE OF WORK FOR THE BUILDING SHELL.

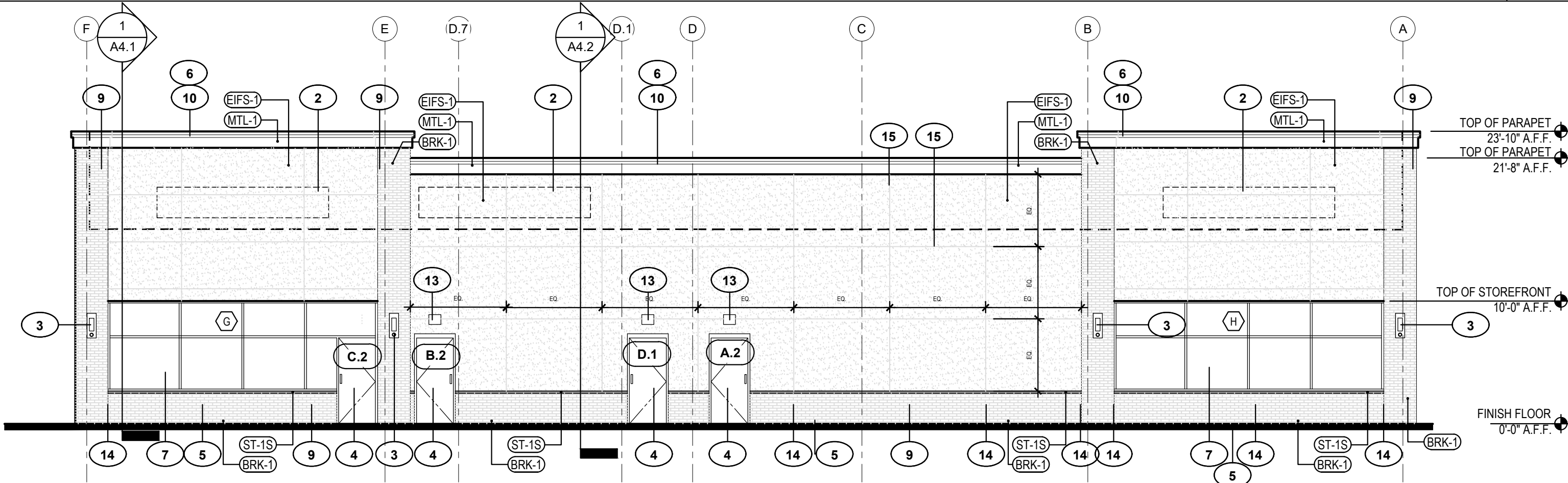


EAST ELEVATION- SIDE

4

Scale= 1/8" = 1'-0"

A 2.1

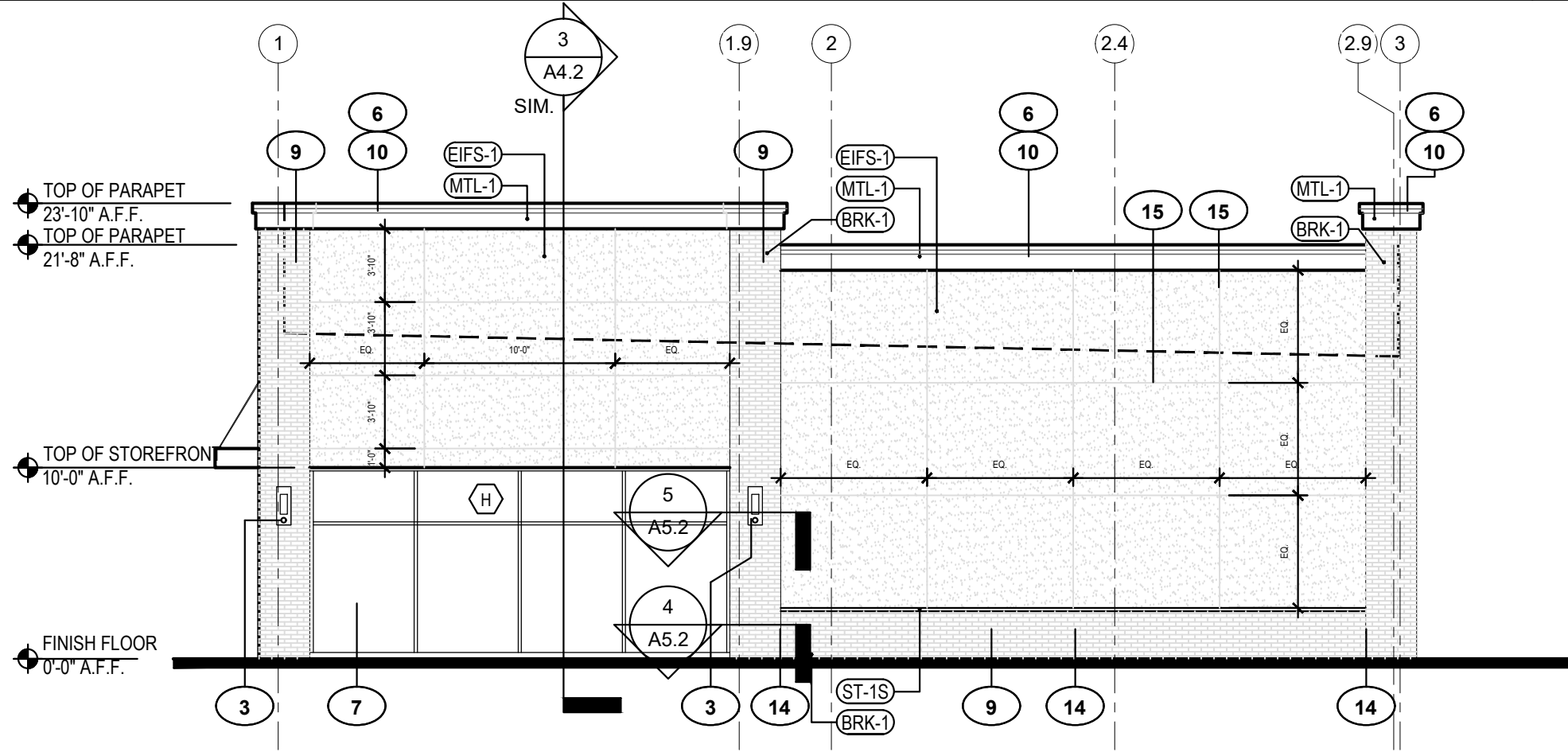


SOUTH ELEVATION- REAR

3

Scale= 1/8" = 1'-0"

A 2.1

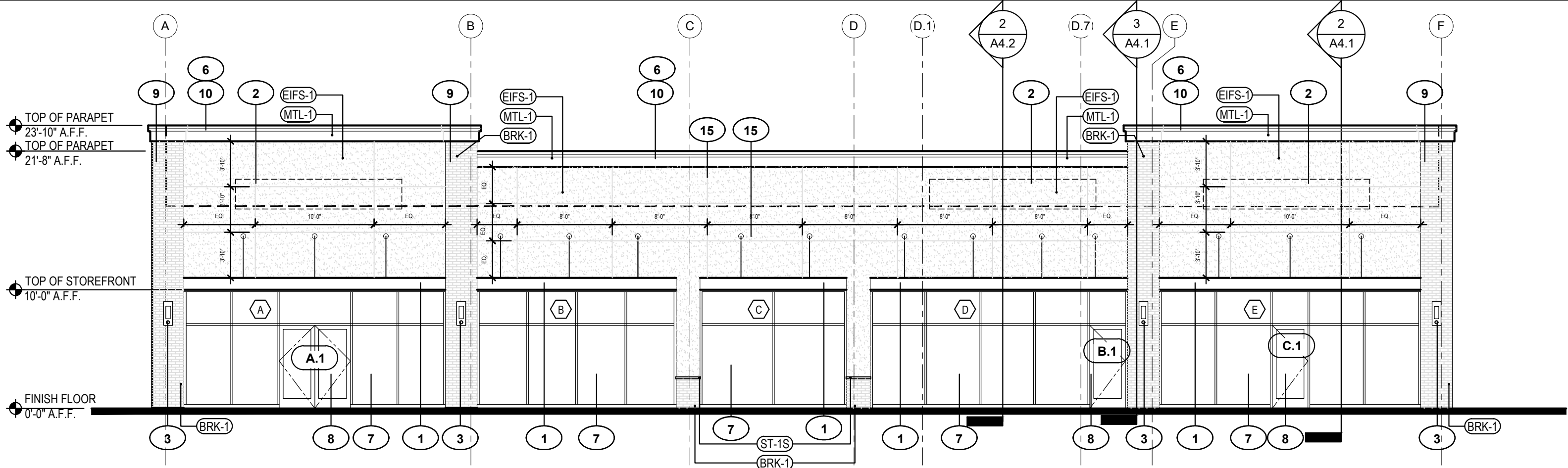


WEST ELEVATION- SIDE

2

Scale= 1/8" = 1'-0"

A 2.1



NORTH ELEVATION- FRONT

1

Scale= 1/8" = 1'-0"

A 2.1



CFT NV DEVELOPMENT, LLC.

1120 N. Town Center Dr., Suite 150
Las Vegas, Nevada 89144

Telephone: 626.372.8425
Facsimile: 626.372.8288

All ideas, designs, arrangement and plans indicated or represented by this drawing are the property of CFT Development, LLC. and were created for use on this specific project. None of these ideas, designs, arrangements or plans may be used by or disclosed to any person, firm, or corporation without the written permission of CFT Development, LLC.

REVISIONS:

ISSUE DATE:

BIDS 2-10-23

DRAWN BY: AB

CFT PROJECT #: 1241

ARCH PROJECT #: JCDD22004700

NORR
ARCHITECTS ENGINEERS PLANNERS

BUILDING B - (SHELL ONLY)
MULTI-TENANT (3 UNITS)

N. PRINCE FREDERICK BLVD & TRASKERS BLVD
PRINCE FREDERICK, MD 20678

A 2.1

EXTERIOR
ELEVATIONS

CFT MULTI-TENANT (3 UNITS)