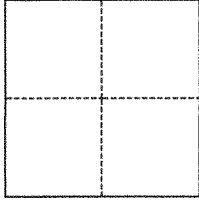


CORNER RECORD

140 38
Agency Index BF 140 pg 38Document Number CR 14789City of OAKLAND County of ALAMEDA, CaliforniaBrief Legal Description MONUMENT AT INTERSECTION OF 83RD AVE & D ST**CORNER TYPE****COORDINATES (Optional)**

- ☐ Government Corner ☒ Control
☐ Meander ☐ Property
☐ Rancho ☐ Other

Date of Survey September 4, 2020

N. _____ E. _____

Elevation _____

Units ☐ Metric ☒ U.S. Survey Foot

Horizontal Datum _____

Zone _____ Epoch Date _____

Vertical Datum _____

☐ Complies with Public Resources Code §§8801-8819☐ Complies with Public Resources Code §§8890-8902

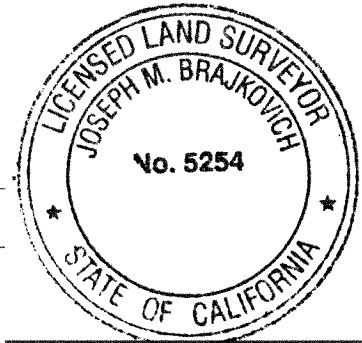
PLS Act Ref.:

☐ 8765(d)☒ 8771☐ 8773☐ Other:Corner/
Monument:☒ Left as found☐ Established☐ Rebuilt☒ Pre-Construction☐ Found and tagged☐ Reestablished☒ Referenced☐ Post-Construction

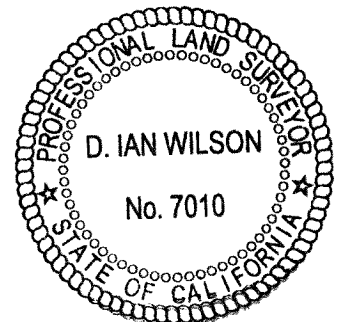
Narrative of corner identified and monument as found, set, reset, replaced, or removed:

☒ See sheet #2 for description(s):**SURVEYOR'S STATEMENT**

This Corner Record was prepared by me or under my direction in conformance with

the Professional Land Surveyors' Act on January 29, 2021Signed  P.L.S. or R.C.E. No. 5254**COUNTY SURVEYOR'S STATEMENT**This Corner Record was received August 14, 2021and examined and filed August 17, 2021Signed  P.L.S. or R.C.E. No. 7010Title ALAMEDA COUNTY SURVEYOR

County Surveyor's Comment



LEGEND

AA###A#

ALAMEDA COUNTY MONUMENT ID

#####

STREET ADDRESS

APN

ASSESSOR'S PARCEL NUMBER

X

CUT CROSS

○

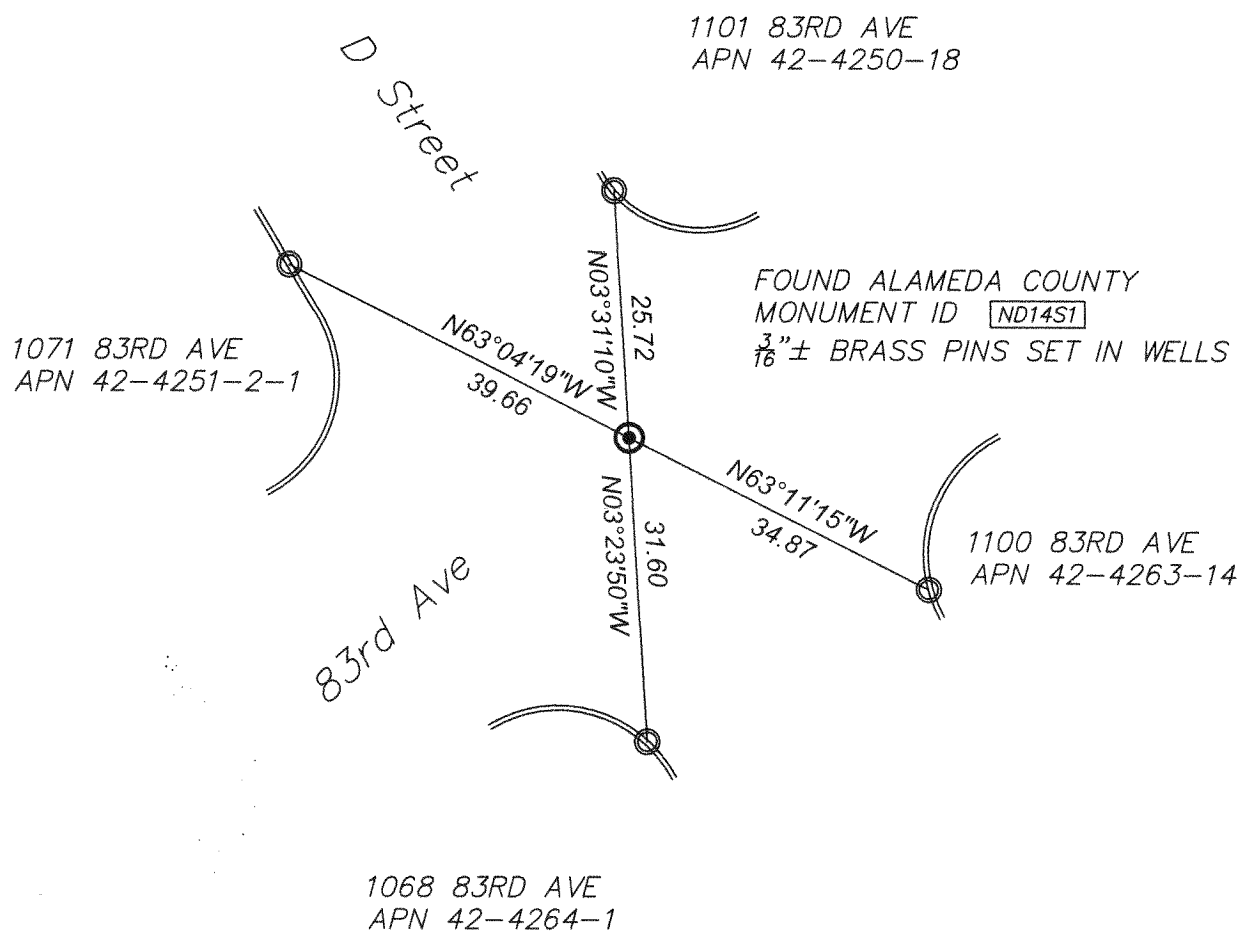
SET NAIL/WASHER

⊙

SURVEY MONUMENT

SCALE: 1" = 20'

0 20 40



20010