

BASIS OF BEARINGS

(N89°27'24"W) 2.3 - BETWEEN FOUND MONUMENTS MARKING THE SOUTHEASTERLY CORNER OF PARCEL 13 AND THE NORTHEAST CORNER OF SECTION 5, TOWNSHIP 17 NORTH, RANGE 13 WEST, M.D.M. AS SHOWN ON M.C. 2, D. 12, P. 3, M.C.R. DRAWER 11, PAGE 67, MENDOCINO COUNTY RECORDS AND MAP CASE 2, D. 12, P. 3, M.C.R. DRAWER 11, PAGE 67, MENDOCINO COUNTY RECORDS.

LEGEND

- SET 1/2" IRON PIPE MARKED LS 4805.
- △ FOUND 1/2" IRON PIPE MARKED LS 3089 AS SHOWN ON M.C. 2, D. 5, P. 37, M.C.R.
- FOUND 1/2" IRON PIPE MARKED LS 3089 AS SHOWN ON M.C. 2, D. 11, P. 67, M.C.R. AND M.C. 2, D. 12, P. 3, M.C.R.
- FOUND MONUMENT AS NOTED.
- ⊗ NO MONUMENT FOUND OR SET THIS SURVEY.
- ⑩ SEE CORNER INFORMATION SHEET 4 OF 4.

RECORD INFORMATION

THE BEARINGS AND DISTANCES OF THIS SURVEY AGREE WITH REFERENCED RECORD DATA UNLESS SHOWN OTHERWISE.

RECORD DATA FROM:

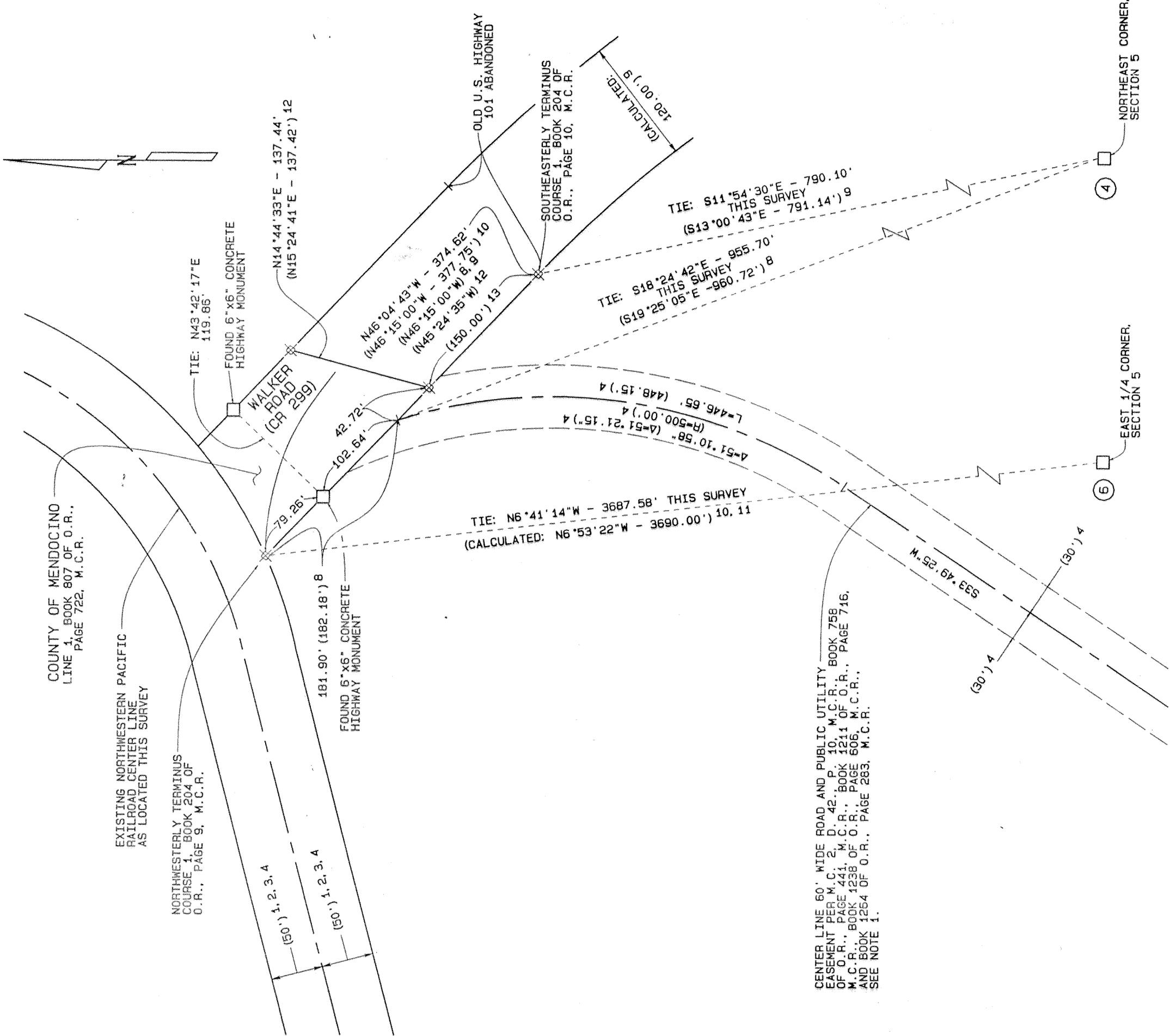
- ( ) 1 MAP CASE 2, DRAWER 5, PAGE 37, M.C.R.
- ( ) 2 MAP CASE 2, DRAWER 11, PAGE 67, M.C.R.
- ( ) 3 MAP CASE 2, DRAWER 12, PAGE 3, M.C.R.
- ( ) 4 MAP CASE 2, DRAWER 42, PAGE 10, M.C.R.
- ( ) 5 MAPS DRAWER 67, PAGE 4, M.C.R.
- ( ) 6 LITBEE 160 OF DEEDS, PAGE 126, M.C.R.
- ( ) 7 BOOK 72 OF OFFICIAL RECORDS, PAGE 448, M.C.R.
- ( ) 8 BOOK 204 OF OFFICIAL RECORDS, PAGE 9, M.C.R.
- ( ) 9 BOOK 204 OF OFFICIAL RECORDS, PAGE 10, M.C.R.
- ( ) 10 BOOK 210 OF OFFICIAL RECORDS, PAGE 457, M.C.R.
- ( ) 11 BOOK 231 OF OFFICIAL RECORDS, PAGE 88, M.C.R.
- ( ) 12 BOOK 807 OF OFFICIAL RECORDS, PAGE 722, M.C.R.
- ( ) 13 BOOK 1264 OF OFFICIAL RECORDS, PAGE 283, M.C.R.
- ( ) 14 BOOK 1509 OF OFFICIAL RECORDS, PAGE 370, M.C.R.
- ( ) 15 BOOK 1509 OF OFFICIAL RECORDS, PAGE 372, M.C.R.

NOTES

- RECORD COURSES PER M.C. 2, D. 5, P. 37, M.C.R. AND M.C. 2, D. 42, P. 10, M.C.R. FOR THE NORTHEAST CORNER OF SECTION 5, TOWNSHIP 17 NORTH, RANGE 13 WEST, M.D.M. AS SHOWN ON M.C. 2, D. 12, P. 3, M.C.R. DRAWER 11, PAGE 67, MENDOCINO COUNTY RECORDS.
- RECORD COURSES PER M.C. 2, D. 11, P. 67, M.C.R. AND M.C. 2, D. 12, P. 3, M.C.R. FOR THE SOUTHEAST CORNER OF SECTION 5, TOWNSHIP 17 NORTH, RANGE 13 WEST, M.D.M. AS SHOWN ON M.C. 2, D. 12, P. 3, M.C.R. DRAWER 11, PAGE 67, MENDOCINO COUNTY RECORDS.

CORNER INFORMATION

- FOUND 1/2" IRON PIPE MARKED LS 3089 AS SHOWN ON M.C. 2, D. 12, P. 3, M.C.R. BEING ON THE NORTHERLY LINE OF PARCEL 3, ACCEPTED THIS SURVEY AS BEING ON THE NORTH LINE OF SECTION 5, T. 17 N., R. 13 W., M.D.M.
- NORTH 1/4 CORNER, SECTION 5, T. 17 N., R. 13 W., M.D.M. THIS POSITION WAS DETERMINED BY INTERSECTING THE NORTH LINE OF SECTION 5 WITH THE FOUND MONUMENTS LOCATED BY THE CORNER PARCEL 3, AS LOCATED PER M.C. 2, D. 12, P. 3, M.C.R. AND THE NORTHEASTERLY CORNER PARCEL 3 PER M.C. 2, D. 12, P. 3, M.C.R. NO POINT FOUND OR SET THIS SURVEY.
- E1/16 CORNER, SECTION 5, T. 17 N., R. 13 W., M.D.M. THIS CORNER POSTIONED BY SINGLE PROPORTION BETWEEN THE NORTH 1/4 CORNER AND THE NORTHEAST CORNER OF SECTION 5. NO POINT FOUND OR SET THIS SURVEY.
- SECTION 3/4 UNMARKED IRON PIPE IN OLD EAST/WEST FENCE, ACCEPTED AS THE NORTHEAST CORNER, SECTION 5, T. 17 N., R. 13 W., M.D.M. AS SHOWN ON M.C. 2, D. 11, P. 67, M.C.R. AND M.C. 2, D. 12, P. 3, M.C.R. AND M.C. 2, D. 42, P. 10, M.C.R. FOUND BEARING TREE LOCATED THIS SURVEY: N47°00'00"W, 37.0' TO 4" WHITE OAK WITH OLD FACE.
- N1/16 CORNER, SECTION 5, T. 17 N., R. 13 W., M.D.M. THIS CORNER POSTIONED BY SINGLE PROPORTION BETWEEN THE NORTH 1/4 CORNER AND THE EAST 1/4 CORNER OF SECTION 5. NO POINT FOUND OR SET THIS SURVEY.
- FOUND 2" UNMARKED GALVANIZED IRON PIPE AT NORTH/WEST FENCE INTERSECTION, ACCEPTED AS THE EAST 1/4 CORNER, SECTION 5, T. 17 N., R. 13 W., M.D.M. AS SHOWN ON M.C. 2, D. 11, P. 67, M.C.R.
- CE1/16 CORNER, SECTION 5, T. 17 N., R. 13 W., M.D.M. THIS CORNER POSTIONED BY SINGLE PROPORTION BETWEEN THE NORTH 1/4 CORNER AND THE EAST 1/4 CORNER OF SECTION 5. NO POINT FOUND OR SET THIS SURVEY.
- CENTER 1/4 CORNER, SECTION 5, T. 17 N., R. 13 W., M.D.M. MONUMENTS FOR THIS POSITION AS LOCATED THIS SURVEY SHOWN ON M.C. 2, D. 11, P. 67, M.C.R. AND M.C. 2, D. 12, P. 3, M.C.R. WERE NOT ACCEPTED. CORNER POSTIONED BY DISTANCE PROPORTION FROM THE CN1/16 CORNER, SECTION 5 TO THE EAST 1/4 CORNER, SECTION 5 BASED UPON THE RECORD DISTANCE OF 1352.23' AS SHOWN ON M.C. 2, D. 11, P. 67, M.D.M. AND M.C. 2, D. 12, P. 3, M.C.R.
- FOUND 1/2" IRON PIPE MARKED LS 3089 AND ACCESSORIES FOR THE CN1/16 CORNER, SECTION 5, T. 17 N., R. 13 W., M.D.M. AS SHOWN ON M.C. 2, D. 11, P. 67, M.C.R. AND M.C. 2, D. 12, P. 3, M.C.R.
- FOUND 1/2" IRON PIPE MARKED LS 3089 AND ACCESSORIES FOR THE CN1/16 CORNER, SECTION 5, T. 17 N., R. 13 W., M.D.M. AS SHOWN ON M.C. 2, D. 11, P. 67, M.C.R. AND M.C. 2, D. 12, P. 3, M.C.R.
- FOUND 1/2" IRON PIPE MARKED LS 3089 AS SHOWN ON M.C. 2, D. 12, P. 3, M.C.R. BEING THE NORTHEASTERLY CORNER OF PARCEL 3, ACCEPTED THIS SURVEY AS BEING ON THE CENTER LINE OF SECTION 5, T. 17 N., R. 13 W., M.D.M.
- SET 1/2" IRON PIPE MARKED LS 4805 FOR NE1/16 CORNER, SECTION 5, T. 17 N., R. 13 W., M.D.M. CORNER POSTIONED BY INTERSECTING THE E1/16 AND CE1/16 CORNERS WITH THE CN1/16 AND N1/16 CORNERS, SECTION 5.



PARCEL MAP

MS 6-96  
BEING A PORTION OF THE NORTHEAST 1/4 OF SECTION 5, TOWNSHIP 17 NORTH, RANGE 13 WEST, M.D.M. AND A PORTION OF THE SOUTHEAST 1/4 SECTION 32, TOWNSHIP 18 NORTH, RANGE 13 WEST, M.D.M.  
MENDOCINO COUNTY, CALIFORNIA  
SCALE AS SHOWN  
JULY, 2000

# 65

SHEET 4 OF 4

MAPS

DRAWER 67

PAGE 90

95-70