

84/59

PARCEL MAP NO. 1524
CITY OF SAN LEANDRO
ALAMEDA COUNTY, CALIFORNIA

BEING A DIVISION OF LAND UNDER OWNERSHIP OF
TERMINAL COMMERCIAL CO., INC.
RECORDED JUNE 13, 1972, ON REEL 3155, IMAGE 51
AND RECORDED DECEMBER 3, 1957, IN BOOK 8536 O.R., PAGE 43

BISSELL & KARN, INC.
CIVIL ENGINEERS
SAN LEANDRO, CALIFORNIA
SCALE: 1" = 50'
AUGUST, 1974

BASIS OF BEARINGS:

BASIS OF BEARINGS IS TRACT 1792, CITY
OF SAN LEANDRO, FILED JUNE 21, 1957, IN
BOOK 38 OF MAPS, PAGE 31.

★ USE WITH CAUTION ★
THIS IS A PUBLIC WORKS DEPARTMENT
WORKING COPY OF AN OFFICIAL MAP
ON FILE IN THE OFFICE OF THE COUNTY
RECORDER, COUNTY OF ALAMEDA. OF-
FICE INFORMATION OR CALCULATIONS
MAY HAVE BEEN ADDED HEREON.

SURVEYOR'S CERTIFICATE:

THIS MAP WAS PREPARED UNDER MY
DIRECTION AND WAS COMPILED FROM RECORD
DATA IN CONFORMANCE WITH THE REQUIRE-
MENTS OF THE SUBDIVISION MAP ACT AT THE
REQUEST OF ELECTRIC STEEL FOUNDRY
COMPANY ON AUGUST 14, 1974.
I HEREBY CERTIFY THAT ALL PROVISIONS
OF APPLICABLE STATE LAW AND LOCAL
ORDINANCES HAVE BEEN COMPLIED WITH.

BY: D.M. Bissell
D.M. BISSELL
REGISTERED CIVIL ENGINEER NO. 9821

CITY ENGINEER'S CERTIFICATE:

THIS MAP HAS BEEN EXAMINED THIS
25th DAY OF October, 1974, FOR CONFORM-
ANCE WITH THE REQUIREMENTS OF SECTION
11575 OF THE SUBDIVISION MAP ACT.

BY: R.H. Ward
CITY ENGINEER
CITY OF SAN LEANDRO
REGISTERED CIVIL ENGINEER NO. 8375

CITY CLERK'S CERTIFICATE:

THIS MAP WAS PRESENTED TO THE CITY
COUNCIL OF THE CITY OF SAN LEANDRO
AND WAS APPROVED ON THE 14th DAY OF
October, 1974.

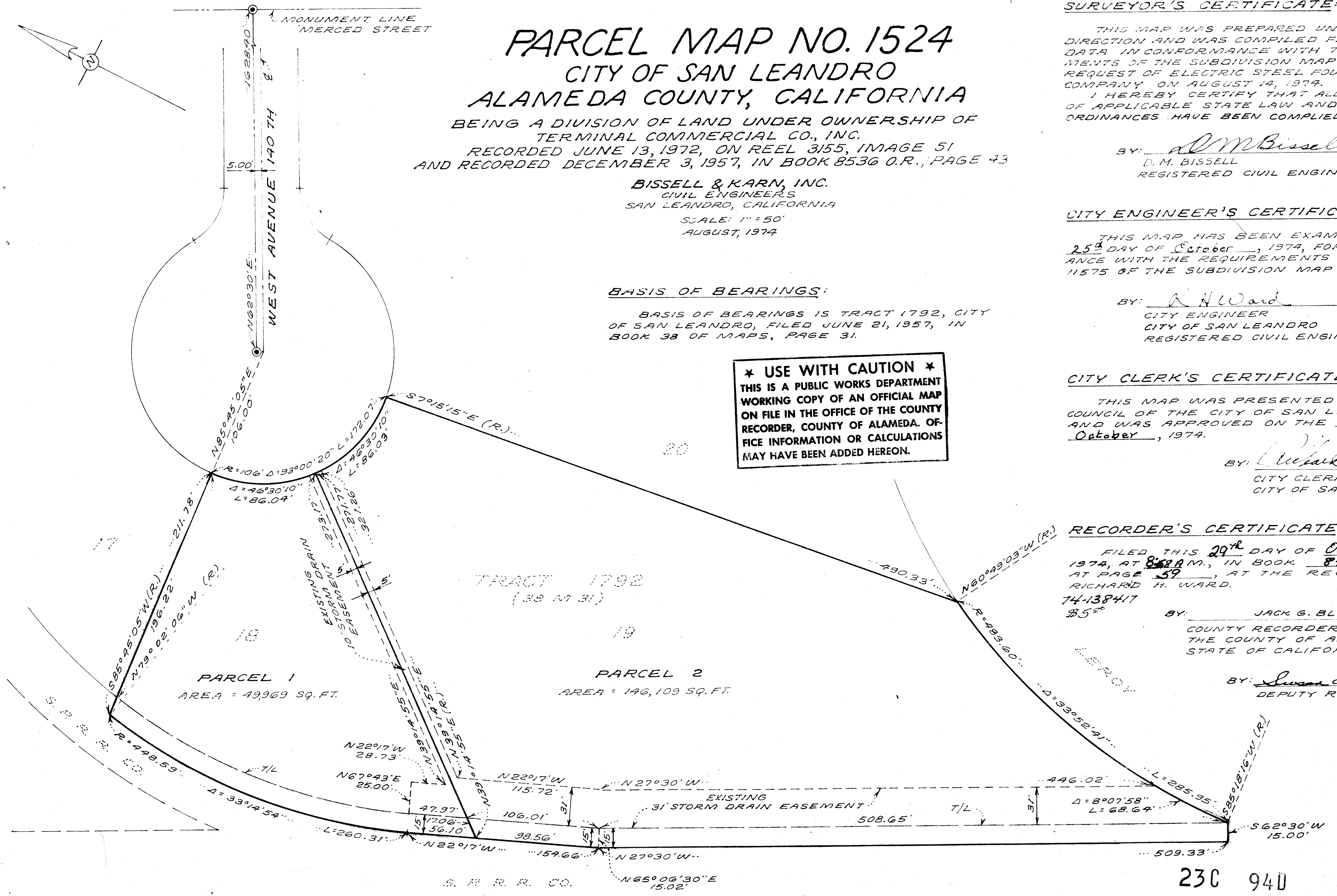
BY: Richard H. Ward
CITY CLERK
CITY OF SAN LEANDRO

RECORDER'S CERTIFICATE:

FILED THIS 29th DAY OF October,
1974, AT 8:24 A.M., IN BOOK 84 OF MAPS
AT PAGE 59, AT THE REQUEST OF
RICHARD H. WARD.

74-138417
85th
BY: JACK G. BLUE
COUNTY RECORDER IN AND FOR
THE COUNTY OF ALAMEDA
STATE OF CALIFORNIA

BY: Susan Leeper
DEPUTY RECORDER



PARCEL MAP NO. 1524
SHEET 1 OF 1 SHEET

Map BK 84 Pg 59
FILED 10-29-74
84/59